



Inside



Sadly missed. An inspiration to many. See Page 9.



Manaia gets its own doctor. See page 4.



Kiwi airman remembered in Holland. Page 11.



New principal of Rahotu Primary School. See page 3.

Local news, local people, local businesses, local sport, local arts and events. Delivered free around the mountain every fortnight.



editorial@opunakecoastalnews.co.nz
ads@opunakecoastalnews.co.nz
accounts@opunakecoastalnews.co.nz
Phone: 06 761 7016
23 Napier St, Opunake
OPUNAKE & COASTAL NEWS

Prime minister-elect Chris Luxon celebrates with his family



From left daughter Olivia, Chris Luxon, wife Amanda and son William.

The 2020 election is merely a distant memory as the Labour Party's 50% vote take was all but halved as National swept to victory with about 40% of the total vote and 50 seats. Chris Luxon, the prime minister-elect will likely form a coalition government with ACT (Association of Consumers and Taxpayers), which is led by David Seymour.

On current count Labour seem to have lost 32 seats, and are narrowly hanging on in the once safe Mt Albert electorate, once held by former prime ministers

Dame Jacinda Ardern and Helen Clark.

However, with over half a million special and overseas votes yet to be counted, it is possible that the incoming government may lose several seats they are narrowly ahead in and may need New Zealand First as a third coalition partner. They are led by Winston Peters, often referred to as the kingmaker. At present the coalition partners need 61 seats to form a government, but a resurgence of Te Pati Maori in the seven Maori seats, creating an overhang (where more electorate seats

are gained than expected by the percentage vote) could mean that 62 or 63 seats could be needed.

On election night Labour had a 26.4% share of the vote (34 seats), with their potential allies the Greens with 10.6% (13 seats), who look likely to have won two or three electorate seats, including Chloe Swarbrick (Auckland Central) and Tamatha Paul (Wellington Central)

ACT scored 9.2% of the votes (12 seats), an improvement from the 7.5% it obtained at the 2020 election. Apart from

David Seymour's success in Epsom, it looks like their deputy leader Brooke van Velden has won Tamaki, once held by long term prime minister Rob Muldoon.

Te Pati Maori have won 5 seats with 2.5%. Cabinet minister Nanaia Mahuta has lost her seat of Waikato-Tainui. The new MP is Hana-Rawhiti Maipi-Clarke who at 21 is the youngest parliamentarian in 170 years. Back in the 2017 election the party lost all representation after nine years in coalition with National, so this is a good result for them.

Mr Luxon, who entered

parliament at the last election has had a meteoric rise to the top job. He became leader of National 683 days ago.

The deputy leader of National Nicola Willis is likely to be the new Minister of Finance, replacing Labour's Grant Robertson.

Although the Labour caucus has met since the election, there has been no announcement from the outgoing prime minister Chris Hipkins as to whether he will continue to be Labour's leader (and Leader of the Opposition).

Old Tom and the killer whales

Evolutionary secrets of 'Old Tom' and the killer whales of Eden has been revealed by a genetic study

Evolutionary biologists have for the first time decoded the genetic

lineage of a famous killer whale and a pod that once worked alongside whale hunters off the coast of New South Wales. In the great Australian tradition of claiming New Zealand's celebrities as its own, Old

Tom, the leader of a pod of killer whales that famously helped whalers hunt baleen whales in the 20th century, has ancestral links to modern-day killer whales in New Zealand, according to new DNA research. Old

Tom also shared a common ancestor with killer whales from Australasia, the North Pacific, and North Atlantic Oceans, but is most similar to modern New Zealand killer whales. However, most of Tom's DNA code

is not found in other killer whales globally suggesting that the killer whales of Eden may have become extinct locally.

Journal of Heredity



Letters to the Editor

Send your your views to: Letters to the Editor
23 Napier Street, Opunake.. Ph (06) 761 7016
email: editorial@opunakecoastalnews.co.nz

You are welcome to use a pseudonym but must supply your name and address to us.

“Let’s create your business growth strategy together”

Your only local community accounting firm



Hawera - Opunake - Patea - 06 278 4169

Opunake Office hours:

Mon & Thurs: 9am-3pm, Wed: 10am-3pm

More Opunake & Coastal News’ out

We have printed more copies of the Opunake & Coastal News.

It is available on stands at the following locations

New Plymouth:

Ate Forty One, Tukapa St, Westown

Challenge Spotswood

The Health Shop on the ground floor at Centre City

The Store, Cnr Tukapa St & Wallath Rd

Waitara:

Outside the North Taranaki Community House Trust, 67 McLean St

Inglewood:

Inglewood Book Centre, 31 Rata St

Stratford:

Stratford Knit & Sew, 202 Broadway

First National, Stratford.

Eltham:

Eltham Four Square

Hawera:

At First National, High Street

Hospital Supa Store, 52 Hunter Street

The Sunshine Dairy, 246 South Rd

Glover Dairy & Convenience Store, 187 Glover Rd

Nursery Rhyme, 158 High Street

Papers are also available at

The Normanby Dairy

Swetes Dairy, Manaia

Farm Source, Pungarehu

Okato Takeaways

OPUNAKE & COASTAL NEWS

Registered office: 23 Napier Street, PO Box 74, Opunake

Phone: Office (06) 761-7016, A/h (06) 761-8206

For advertising, email: ads@opunakecoastalnews.co.nz

For editorial, email: editorial@opunakecoastalnews.co.nz

For accounts, email: accounts@opunakecoastalnews.co.nz

www.opunakecoastalnews.co.nz

Editor: Bernice McKellar

Journalists/Sales: Rolland McKellar, Bryan Kirk

Advertising/Production: Vanessa Smith

Production/IT: Shane Butler

Delivery: Thursday, fortnightly

Registered as a newspaper.

Member of the Community Newspapers Association of New Zealand



The Opunake and Coastal News is distributed free to every home and business within the rural area bounded in the north by the New Plymouth city border, extending east to Egmont Village, and around to the edge of Stratford, south to the Hawera city border and inland to Kaponga and through Eltham.

While we welcome free speech, the views expressed in the Letters to the Editor do not necessarily reflect those of the Opunake & Coastal News. Please limit letters to 350 words as we sometimes struggle for space to fit them all in.

Taranaki Regional Council and “Community Conversations”

Lengthy invocations have arrived recently via Facebook, email and newspapers. We try to read “Preparing for our future” the TRC’s annual report

and the Deloitte Auditors report and can only conclude that these people all live on another planet.

“Techno-speak” is their real art. Ninety per cent of our fairly literate population have no idea of what is being discussed in these extraordinarily verbose documents. It’s all complete gobbledegook.

Of course we want as much clean water as we can obtain but endless “conversations,

reports, extensive processes, objectives, aspirations and new regulatory environments” do not maketh fresh clean water. It takes action!

Actions that clean up waterways have been known about for thousands of years.

Firstly you don’t poo near them, secondly don’t let your animals wander around and poo in them and thirdly try and keep your chemical use around them down. So

fence off and plant your waterways where possible and encourage landowners, farmers etc to do the same. “Regulatory Environments,” conversations and endless reports just don’t cut the mustard in the end. Do we really need any more conversations?

Don’t let me get started on Deloitte.

David Hancock
Eltham.

Taranaki back in blue

The red surge of the 2020 election has been replaced by a strong showing for the National Party in Taranaki. In the New Plymouth electorate Labour incumbent Glen Bennett lost heavily to National’s David Macleod whose 19,821 votes was 6,450 ahead of Glen Bennett’s. Last time Mr Bennett defeated National’s Jonathan Young, despite the incumbent having a sizable majority. Labour’s party vote fell from 48.1% in 2020 to just 24.4% at this election.



Just one of these politicians to be part of the next Parliament. Mr Little has just announced his resignation.

“It has been a heavy privilege,” Mr Bennett commented. He is proud of the 127 social housing units currently under construction, which was organised during his term in office. He is,

however sorry he will not be a part of Ngati Te Whiti’s plan to build a marae at Ngamotu.

“I’m just feeling relieved, more than anything else,” conceded Mr MacLeod. He

added, “We were in a mood in the country, not just in Taranaki, for a change, and I think my campaign really benefited from that.”

Barbara Kuriger has greatly increased her majority to 12,565 in the Taranaki-King Country electorate. In the 2020 election Labour’s Angela Roberts reduced Mrs Kuriger’s majority to 3134, but was still elected, as a List MP. However, with

Continued on page 3

ADELPHOS

What makes Christianity distinctive? Let’s answer this question by looking at four special invitations. Firstly, consider the three Abrahamic or monotheistic (one God) personal faiths— Islam, Christianity and Judaism. Judaism says Jesus was a fake messiah who died on the cross and stayed dead. Islam says that an imposter looking just like Jesus died on the cross. Christianity says that Jesus, the sinless Son of God, died on the cross for our sins and was resurrected. There were at

least eight instances of the resurrected Jesus appearing to various people during a 40 day period. In one case, “... he appeared to more than 500 of the brothers at the same time, most of whom are still living...” (New International Version). Paul wrote this in 1 Corinthians 15:6 in about A.D. 53-54—only 20 years after the resurrection (A.D. 33 A.D.) with hundreds of eyewitnesses still alive.

Secondly, biblical Christianity is the only world religion where salvation is free and not based on

Four invitations

merit by doing good works (Ephesians 2:8-9). Many people I speak with believe they will merit forgiveness and salvation through working in the church or in worthy volunteer community organisations. The “work” of Jesus on the Good Friday Cross alone merits salvation when we believe, trust and obey Him in our daily lives. A Christian’s good works are the fruit of the Christian tree, not the root of the tree.

Thirdly, Christianity is primarily a faith encounter and personal relationship

with the living Jesus. We can’t inherit the faith/ religion of our parents or grandparents. God has only children, no grandchildren. That’s why Jesus said, “No one can see the kingdom of God unless he is born again (also translated ‘from above’ and ‘born anew’)... Flesh gives birth to flesh, but the Spirit gives birth to spirit. You should not be surprised at my saying, ‘You must be born again’ (John 3:3-7).”

Fourth, and lastly, biblical Christianity is distinctive in that eternal life starts when we believe. Jesus said, “I tell you the truth, whoever hears my word and believes him who sent me has eternal life and will not be condemned; he has crossed over from death to life” (John 5:24; please also see 1 John 5:11-13). God’s Word promises that the Christian’s eternal life begins now in this life. It’s a comforting assurance from Jesus. There’s no need to live a lifetime of doubt hoping until after death to inherit eternal life.

These are God’s four special invitations: the eyewitness evidence of the resurrection, the free gift of salvation without earning it, being spiritually reborn from above and the comforting promise of eternal life now. God is inviting each of us into His family gathering. BYOF (bring your own faith).

Eternally yours,

Adelphos

Vehicle Valet Service



PICKERING MOTORS LTD
OPUNAKE



CONTACT:

Pickering Motors Office on:

06 763 8363 :0800 22 11 20

Ask for Tracey or Linda.

COST: \$85.00 per hour incl g.s.t.

Bookings available Wednesday’s & Thursday’s.

Other days on request.

Car can be picked up and dropped back for small fee.

Vouchers available.

Taranaki back in blue

Continued from page 2.

the swing to National (and away from Labour) she is no longer in Parliament. Highlights for her include

birth injuries being included in ACC, fair pay legislation, as well as 50/50 female representation in Parliament. In the Whanganui electorate National's Carl Bates beat incumbent Steph

Lewis (Labour) with a majority of 5070, despite Ms Lewis having a 2020 election majority of 8,191 votes. Last election Steph Lewis prevailed against Harete Hipango (National).

However, Debbie Ngarewa-Packer, the Te Pati Maori co-leader won Te Tai Hauauru with a 6347 majority. Her main opponent was Labour's Soraya Peke-Mason. "Last election, we

had one goal and that was to get into Parliament, no matter whose seat it was. Our long term view is to grow the movement," Debbie explained. The Speaker Adrian

Rurawhe and former Cabinet minister Andrew Little return to Parliament as List MPs. *However, Mr Little has just announced his resignation as a parliamentarian.*

Matt Moorby is the new principal of Rahotu School

After eleven years teaching at St John Bosco School in New Plymouth, Matt Moorby is the recently appointed Principal of Rahotu Primary School.

He is positive about his new appointment "Coming back to the Coast is exciting," he enthuses. "Rahotu School is the perfect place to start my career as a principal."

He is delighted at the warm and friendly response he has experienced. "It's been great. I've been made to feel very welcome by the Board of Trustees, staff and students."

However, he concedes, after just a few days in the position, "It's pretty full on." He adds, "There is a lot to learn in this new role."

Having graduated in 1998 with a Bachelor of Education from Massey University in Palmerston North, Matt brings a wealth of experience to his new role. In his 25 years as a teacher he has also



Principal Matt Moorby of Rahotu School.

been Deputy Principal at both St John Bosco School and St Joseph's Opunake. He has taught in several local schools around the coast along with positions in New Plymouth.

Apart from academic excellence his sporting prowess in rugby and cricket will ensure physical education will be a definite feature. "Sport is already a major focus here so it will be easy for me to continue this journey alongside the staff and students," he comments.

He is impressed with the school he has assumed leadership of, with its 155 students in seven classes. "I intend to carry on all the good things that are happening here while over time, I will add my own flavour." Digital technology will be one aspect he would like to grow in the school.

Although Matt expects a busy professional life, he hopes he can find time

for his interests, such as woodwork, kayaking and tramping. He adds,

"I see myself as very hands on - I like fixing things."

His young family keep him and Jemma (who teaches at Coastal Taranaki School) fully occupied in their Okato home.

Rubbish and sprays put dampener on festival

With the garden festival season coming up Rose Ratahi is crying foul over spraying practices and rubbish dumping.

For the last 17 years Rose has been one of the mainstays of the Taranaki Fringe Garden Festival with her Opunake garden being a popular drawcard. She has also been heavily involved with maintaining the Cliff Top Garden.

The railway reserve land which backs on to her Hughson Place home and garden is not only part of the Opunake Loop Trail but is a handy parking area for visitors wanting to visit the gardens.

"The buses and campervans can come in and turn around. The ground's solid up that way," she says.

It is somewhere Rose takes a pride in and strives to keep tidy.

With the garden festivals coming up at the end of the month she's not happy at what she's been seeing, whether it be people dumping rubbish here or the effects of spraying.

She points to bare patches between plants on the fence line outside her property.

"I've lost a couple of magnolias I don't know whether it was spray or not."



Piles of rubbish heaped up where festival goers are meant to park their cars.

Last week she took her case to the Taranaki Coastal Community Board.

"Who does the spraying on the old railway reserve land and Loop Trail?" she asked the Community Board at last week's meeting in Opunake.

"We've lost hydrangeas and every colour of watsonia you can name. They don't know what they are spraying. Around the edges of the tracks and the boundaries they just walk along and spray willy nilly.

"I'm just over these so-called sprayers who think they know what they are spraying."

Another problem is rubbish being dumped on the reserve. This includes people throwing their tree prunings and garden rubbish over the fence. She says she has also seen Corrections workers take their weeds away and leave branches behind.

She points to piles of

green waste taking up space which could be used by garden visitors parking their vehicles.

"People have to drive around them," she says. "It's part of the walkway now, it's not a dumping ground. A lot of people use it. You have families coming here on the weekends."

She said when they first moved there the reserve land was just a bare paddock and back then it was possible to have a bonfire to burn rubbish but this was no longer possible.

South Taranaki District mayor Phil Nixon and Community Board chair Andy Whitehead said anybody noticing anything amiss can always contact the Council. One way of doing this is by making use of the Council's antenna app to state their case. Meanwhile Rose is busy

preparing her garden for the festival.

"Everything is a bit late this year," she says. "Fingers crossed, the weekend looks nice."



EP MASTER PLASTER LTD

SMOOTH OPERATOR

- New homes
- Renovations
- Skimming
- Gib fixing
- Coving and cornice
- Commercial

E: epmasterplaster@hotmail.com

Ph: 020 4001 3319



POWER SUPPLY

Rural & Residential

Design, upgrade and repair overhead and underground power supplies

- Powerco Approved Contractor
- Network connections
- Powerline maintenance
- Vegetation control around powerlines
- Fault repair
- Specialists in rural power servicing and installation
- High voltage installation
- Street lighting design and installation
- Underground utility detection



0800 877 746

E powerworx@obertech.co.nz



Telarc
Registered
Health & Safety
ISO 45001



Telarc
Registered
Environment
ISO 14001



Telarc
Registered
Quality
ISO 9001



Taranaki owned and operated

We create all types of new memorial work and restorations, including second inscriptions, repainting and cleaning existing memorials.

We also specialise in unique stone works for special projects.

TINY AUSTIN

021 663 199

tiny@headstonestaranaki.co.nz

Manaia gets full time doctor

For the first time in 30 years Manaia has a fulltime resident doctor.

Dr Thomas Cartier will be practicing out of Ngaruahine Iwi Health Services' new GP clinic Te Whare Hauora o Ngaruahine in Manaia which opened with a powhiri last week.

"It's been 30 years since there's been a doctor in Manaia and if anyone

deserves it Manaia deserves it,' Te Korowai o Ngaruahine chief executive Te Aorangi Dillon said at the powhiri. "It hasn't been easy over the years to get this going. It was a vision of our kaumatua and our wonderful team. They stayed the course and made it happen."

Ngaruahine Health Services CEO Warren Nicholls said that for the last



The team from Te Whare Hauora o Ngaruahine. From left. Onaka-Bonee Rupapera (Kai Manaaki), Leisha Betts (registered nurse), Warren Nicholls (CEO), Thomas Cartier (doctor), Ashley Douglas (Quality), Ashley Fox Kaiareare reception). Absent Trudy Joblin (registered nurse).

two or three months they had been busy getting staff, sorting out systems and the required certifications.

"The number of doctors across South Taranaki is not at the national standard per population," he says. "This is an opportunity to go somewhere towards remedying that and adding another option. In the past Nga Ruahine has brought into doctors' practices like South Care or Mountain View for maybe one day a week. At times we had one day a week clinics and two day a week clinics but it's

been a long time since we had a full time clinic. This is an opportunity for an exclusive service to Manaia for those who wish to enrol."

As well as a fulltime doctor, two practice nurses and a receptionist and administrator there will be a new role of Kai Manaaki. Warren says traditionally the first point of contact for anybody coming into a GP clinic would be the receptionist. In this clinic the Kai Manaaki would be the first point of contact who would assess the client's situation and navigate them

towards the appropriate outcome.

Thomas Cartier who had been a GP in France shifted to New Zealand four years ago. Six years ago he had visited New Zealand on a two and a half month holiday and travelled from Cape Reinga to Bluff. At that stage he was already thinking of leaving France and having completed a Master of Public Health from Manchester University he says he had an attraction to the English-speaking world. He had also liked what he had seen of Taranaki. After

making the shift to New Zealand he practiced as a doctor in the Ngati Ruanui clinic at Patea.

In June he had heard that Warren was looking for somebody for Manaia, contacted him and things moved on from there.

Thomas likes the general practice model of medical care.

"It allows people to get health care in a timely manner close to where they live."

Another advantage is the continuity of care, from childhood to growing up to getting older.

"Your GP is here all the time," he said.

He says he is comfortable working in a rural health and Maori health setting which fits in well with the GP model.

"GPs have been using the Whanau Maori health model across the world without knowing it," he says. "It's what I was doing in France."

inequities experienced by rural students through priority entry or quotas.

Journal of the Royal Society of New Zealand

Rural students face greater barriers to medical school

Researchers studied the rural-urban divide for high school performance in New Zealand finding rural schools had lower NCEA and university entrance attainment rates of around 15% compared to their urban counterparts. They

say the disparity means rural students face greater barriers to entering medical school, and that this inequity is worse for rural Māori students. In order to turn around rural doctor shortages, the authors urge admission schemes to account for educational

You can **rely on us** for your energy needs

www.rockgastaranaki.co.nz

Transform your home - all your hot water, space heating and cooking needs from your trusted local Rockgas supplier.

Count on us - reliable delivery of 45kg LPG cylinders to your home, business, or farm where ever you live.

Locally operated and proud to be part of your community

rockgas
TARANAKI

Call Rockgas Taranaki
0800 LPG 2 YOU or 06 757 9264

Happy 1st Birthday Agrimec Auto 2022

AGRIMEC AUTOS 2022

BIRTHDAY GIVEAWAY

Spend \$25 instore for the month of November and go in the draw to win a \$200 voucher.

AGRIMEC AUTOS 2022

Phone: 06 761 8999 | 027 354 6017

TBL
TARANAKI BUILDING LTD

Local Builder
Shaun Stanley Ph 0278 186 385

TBL
TARANAKI BUILDING LTD

SUPPLIES
OPEN HOURS
MON-SAT 9AM - 1PM
181B TASMAN STREET OPUNAKE

Simple But Significant

a simple cremation & burials

Helping Taranaki families with a range of simple, professional funeral services. With affordable caskets, urns & jewellery.

0800 236 236 233 Carrington St
www.asimplecremation.co.nz New Plymouth

A mixed bag in latest funding applications

Plans for a Maara Kai to grow and learn about growing food at Orimupiko Marae got a helping hand at the Taranaki Coastal Community Board meeting at Opunake last week.

The Orimupiko Reserve Trust was seeking \$10,000 from the board's discretionary fund. The application was one of six funding applications the board considered at their October 4 meeting.

Angela Teasdale told the board that the plan is to set up the Maara Kai at the back of the marae. The land has never been cultivated and is currently just grass with a hangi pit located towards the back boundary fence. The Maara Kai would see the creation of raised and market garden style beds for growing food. There would be a greenhouse and children's play area, a herb spiral, storage shed, a water feature and orchard and food forest on the northern boundary with swales for catching, spreading and slowing water.

The project would also include workshops on planting, growing, harvesting and cooking food. There were also plans for a pataka kai where food could be left and picked up by those who needed it. Angela said she had grown up with a garden



Orimupiko Marae.

and knew the value of being able to grow your own food. She said a pumpkin at the supermarket could cost \$14.95 so it made more sense to grow them.

Community Board chair Andy Whitehead said projects like these are proving a success at Parihaka and Manaia. The board voted to grant \$2000.

As reported in the Opunake and Coastal News St Pauls Co-Operating Church's application for \$10,000 from the Board's discretionary fund to paint and repair the Rahotu Youth Hall had

previously been deferred twice. Monica Willson said the discretionary fund is a fund of last resort and although the project was a worthy one, she would like them to try other funding options before coming to the Community Board. The board voted to decline the application. South Taranaki District mayor Phil Nixon said the board should write to the applicant telling them why the application had been declined and that they would be welcome to apply again after they had tried to get funding from other places.

An application for \$5000 from the Everybody's Theatre Trust to replace old seating and update the signwriting on the windows was declined for similar reasons.

The Opunake community Baths applied for \$9596.30 for maintenance and improvements. Board chair Andy Whitehead noted that they had looked elsewhere for funding. Facility manager James Cos said they had already installed a storage shed and a baby's changing shed and were looking to add power to make the air

a bit warmer in the facility. He said there had been a "cold snap" the previous week, and with it a drop in temperature. Traditionally the pools opened in October and feedback from the community appeared to favour the pools being open for nine and a half rather than six months, he said.

"In the last few years we've made massive improvements and we want to make it more user friendly." The board voted to grant \$1047.

The Oaonui Hall Committee applied for \$5461.99 for kitchen appliances. The board deputy chair Sharlee Mariekura said the hall was well used by a lot of community groups and moved the board fund \$1148.99 which was the cost of the dishwasher the board was being asked to fund. This was carried.

The board also voted to grant \$1500 to the Opunake Emergency Management Fund for Mobile Response Units for the Opunake community.

South Taranaki District Council senior policy advisor Anne Sattler spoke about the Proposed Speed Management Plan for 2024-2027. The South Taranaki District Council like other Road Controlling

Authorities (RCAs) around the country needs to develop a 10-year Speed Management Plan with a three-year implementation period. The Proposed Speed Management Plan focuses around marae, the Hawera CBD, beach communities, reserves and camping grounds and existing 70kph roads. The Council is calling for submissions. Anne Sattler said they also want public feedback on lowering speed limits on our rural roads that have had the most deaths or serious injuries

Cr Aaron Langton said feedback on the 30kph speed limits around schools had been "pretty good," but some of the other reductions were "almost like another attack on our smaller communities."

Andy Whitehead said he had driven from Stratford and had noted narrower side roads with 100kph speed limits leading on to a good road which had an 80kph limit.

Mayor Phil Nixon said drawing up a speed management plan is something the Council is obliged to do, so anyone with concerns should make a submission to the Council by October 29.

Your local
Banking Hub
- open now.

Book-a-Banker
- now available

Our new book-a-banker service is now available at the Opunake banking hub.

If you're a customer of ANZ, ASB, BNZ, Kiwibank or Westpac, you can book weekly appointments in a private booth with your bank to discuss your financial needs.

Visit the Opunake banking hub to book your meeting today.

**Opunake Banking Hub,
43 Tasman St, Opunake.**



Opunake Banking Hub
Te Pokapū Pēke o Opunake



Hawera Performing Arts mark centenary

As students from all around New Zealand played instruments, sang, danced and acted the week away, the Hawera Performing Arts celebrated 100 years of competitions in Hawera. The judges came from Dunedin, Auckland, Christchurch and Wanganui, all commenting on the high standard of performances they witnessed

in their particular art. The week came to a close on Thursday night with the Gala Performance where 10 students represented their chosen art of vocal and instrumental, dance or speech and drama. They performed to a near capacity audience in the Memorial Theatre where the winners and runner-up of each



Charles Pittams and Christine Cameron cut the cake.

section were announced by guest celebrity adjudicator Turanga Merito from Rotorua. Prizes of \$1,000 and \$500.00 were awarded to the delight of the recipients. Prior to the interval, addresses were given by the Mayor Phil Nixon, and Chairperson Christine Cameron reflecting on the past 100 years of competitions.

The celebration cake was cut by Patron Charles Pittams, and Christine Cameron, which was then enjoyed by the audience along with refreshments served in theatre lounge, where the hum of chatter was reflective of the memories being shared. The Hawera Performing Arts committee was delighted with the success of the week and the Gala performance.

Results. Dance--Winner--Bella Neale, Runner-up Imogen Hodge. Vocal and Instrumental--Winner--Ombre Choir, Runner-up Jonathan Herd. Speech and Drama--Winner--Daisy Fowler, Runner-up--Lucy Forsyth.

gibsonplumbing LTD.

CERTIFIED

Plumbing, Gasfitting and Drain Laying

Plus! Roofing, Wood Fires and other Heating Solutions

06 761 8757 027 445 7164
gibson.plumbing@xtra.co.nz

POWERLINE FAULTS AND SERVICING

From a fuse or broken insulator replaced to a complete powerline rebuild

Call: **TOP OF THE LINE ELECTRICITY SERVICES**

Greg Lewis: 027 453 0326

Powerline Servicing Specialists
Free line inspections
Free advice | Free quotes

Report gives well told but depressing story

The Ministry for the Environment and Stats NZ have released the latest report on the state of our atmosphere and climate. Our atmosphere and climate 2023 brings together recent data, as well as insights from research literature, to show how and why our climate is changing. The report also shows the impacts these

changes are having on the environment, public health, wellbeing, among other aspects, in Aotearoa. Dr James Renwick, Professor of Physical Geography, Victoria University of Wellington, comments: "It's great to see the latest Our Atmosphere and Climate (OAC) report. The series of such reports play a vital role in bridging between the science of the climate system and the human stories we all engage with. The work is based on an excellent scientific understanding, and on solid understanding of the implications of the changing climate. This time, an important addition is that OAC2023 offers outlooks for the future as well as telling the story of the past. "We know that Aotearoa's climate is already changing: temperatures, rainfalls, and extremes of both, and we are already seeing clear

effects on ecosystems, on agriculture, on our economy, and on our physical and mental health. "The future outlooks discussed are very well done, based on plausible emissions scenarios, with good use of uncertainty language. The picture they paint is not positive. The globe is very likely to blow through the 1.5°C warming threshold and may well go through 2°C warming as well. For us, that will mean more droughts, more floods, more coastal flooding, among many other impacts. Marine heatwaves that we have experienced in recent years will become the average conditions before the end of the century. "All of this implies huge impacts on ecosystems, weakening the resilience of those ecosystems. No different for human ecosystems – we are part of the climate system and everything we know will

change. Negative impacts on New Zealand's economy and our prosperity will become larger as time goes on, as will impacts on human physical and mental health. There will be big impacts on kaupapa and tikanga Māori and on many aspects of the world around us that we 'take for granted.' It's likely inequalities will increase as those with the least resources struggle to manage. "Overall, OAC2023 is an extremely well-told but a very depressing story. The knowledge that the globe has just had its warmest September, August, and July, and will most likely record its warmest year in 2023, only underlines the dangers discussed in this report. If we need more justification for taking urgent action on reducing emissions and becoming more resilient, Our Atmosphere and Climate 2023 is the place to look."

REAR CATCHING 1023 XT2
21.5HP Kawasaki® V-Twin
Fuel Tank 11.4 Litres
PTO Clutch Electronic Blade Engagement
Turning Radius 40cm / 11"
Four Spoked Hydrostatic

\$10,499

STIGA ESTATE 7102W
CATCHING RIDE ON
20 HP Stiga ST160 Series, 625 cc, V-Twin Engine
40" (102cm) Twin Spindle
Mowing Deck
Fuel Controlled Hydrostatic Transmission
30mm - 40mm cutting height, 7 Position

\$8,999

439/38 RAIDER
Rover 438cc OHV Engine • Fuel Tank 6.7 Litres
PTO Clutch Manual Blade Engagement
Turning Radius 46cm / 11" • 6 Speed Manual
With 40 years of experience in the Australian, the Raider line of utility vehicles is known for reliability and durability. With the reputation for providing an easy alternative, the Raider line ranges in affordability and is packed with features for excellent maneuverability and stability. Experience the epitome of safety, control, and performance. Embrace the power and convenience of a Rover and welcome you to the maintenance routine.

\$3,999

HUSTLER DASH 42" RIDE ON
The Dash 42 is Hustler's most compact residential model available in the New Zealand market. It embodies Hustler's ingenuity in a small yet powerful package. A compact design makes it ideal for garage storage, and for fitting through tight spaces with ease.

\$9,995

WE PICK UP AND DELIVER TARANAKI WIDE
*Minimum 10 years spare parts on STIHL tools. *At participating retailers. Offers apply to selected STIHL products and valid from 01 September 2023 – 30 November 2023 or while stocks last. See in-store for details.

Love Your Land

STIHL SHOP HAWERA
Cnr Glover Rd & Union St
Ph: 06 278 4753 Fax: 06 278 5682
Email: hawera@stihlshop.co.nz

STIHL SHOP
Outdoor Power Equipment
www.stihlshop.co.nz

Enjoy Life!

Let us take care of the rest.

SOUTH TARANAKI FUNERAL SERVICES
Ph: 06 2788 088 - 24hrs

Kaponga WI go golfing

With October being our birthday month we had the second mini golf challenge at Inglewood mini golf venue. It is to be a regular event for our birthday and this year it was to celebrate 92 years.

A trophy has been donated by Jo and Lindsay Berquist and this year it was narrowly



Kaponga WI members happy with their play.

won by Carolyn Nicholas. Three players got a hole in one – Joy Eliason, Dorothy Hughes and Sharyn Hurley

After golf it was off to Tawa Glenn for lunch where we had a short meeting after ordering our meals. President Jo Ellis welcomed those present and plans were made for those attending

the Fun and Friendship Day coming up. And for International Day in Pihama on November 14 with the theme being Greece.

Shirley O'Rourke, who is a past valued member of Kaponga WI, is having a special birthday and members good wishes are to be sent to her.

The plans for the Christmas celebration were discussed with ideas to be investigated.

A beautiful lunch and chat were enjoyed with nobody in a hurry to head out into the horrid weather.

OKATO COPS

Kia Ora Koutou,

As an avid rugby fan I have been enjoying the copious amounts of viewing in recent weeks. The Rugby World Cup has had a blockbuster weekend of rugby, and the Taranaki Bulls have done the province extremely proud. My voice has not yet recovered.



Constable Matt Stone.

It is a timely reminder to everyone, particularly as the

Don't drink and drive - it is not worth the risk to yourself or others

weather improves and we gather socially more often, to monitor your alcohol intake if you are driving. The last thing we want in our community is a death, particularly from a selfish act.

I have had an increasing involvement in agreement or contract type disputes

in recent times. With time being an ever-depleting commodity often we make verbal agreements, such as leases or tenancy agreements, but nothing is written down and signed. I emphasise the importance of writing down and signing an agreement so that conditions are clear and cannot be

argued. This will resolve a lot of problems.

Lastly, country roads often don't have centre lines. The law says you must keep to the left side of the road. Many people, not just our 'young hoon's', are becoming lazy, cutting corners, taking shortcuts, etc. Don't allow laziness, gaining less than a

second in your trip, to be the reason for causing a fatal car crash.

Apologies to end on a negative note but sometimes a reality check is required for means of safety.

Until next time.

Nga Mihi,

Matt Stone,
Okato Police

On this month in history William Larnach dies

On October 12, 1898 parliamentarian William James Mudie Larnach died in Wellington. A revolver was found beside him in one of the offices in parliament. He was buried in the family vault in the Dunedin Northern Cemetery. He was born on January 27,

1833 in the Hunter region of New South Wales, Australia.

He is best known for building a magnificent home known as Larnach's Castle in Dunedin, although he called it simply The Camp. Owned by the Barker family since 1967, it is one of Otago's main tourist attractions.

Larnach started building the building in 1871 and it took several years to complete and had 43 rooms and many acres of grounds.

He was an astute businessman and banker and was a good friend of his leader Prime Minister Richard Seddon, who visited

The Camp on occasion.

It is rumoured that William Larnach was greatly distressed by his son possibly

having an affair with his third wife Constance. His earlier two wives predeceased him.

Larnach's Castle is a

must-see for any visitor to Dunedin.



HOUSE & LAND PACKAGES

- Residential Development
- Your plan our builder
- Pre-designed plans
- Townhouses / Duplex
- Design and Build
- Kitset

taranakisales@milestonehomes.co.nz | 06 757 4483

milestonehomes.co.nz

In today's business world, accountants are no longer just 'number-crunchers'. They've evolved into strategic business partners, and relying on an annual "set of accounts" is no longer the best way to manage your business finances. If you're still doing your GST returns to "save money," you are likely to be missing out on significant opportunities. The team at Murphy & Landrigan Chartered Accountants has adapted our business model to meet this need, and here's why having an involved accountant is crucial.

With the current cost of living challenges, the idea of processing your own GST is appealing – essentially thinking you're cutting costs. But here's the catch – if your accountant is only seeing or talking to you for an end of year meeting it is likely you will be discussing what was happening in your business up to 9 months previously. That means you're reacting to last year's numbers, missing out on tax-planning opportunities and delaying crucial financial decisions. That's why we have revamped our approach and now review our clients' financial files every two months while preparing our client's GST returns at no additional cost that their agreed fee proposal set at the start of each year.



The heart of our transformation lies in our highly experienced team of accountants. Our team are all advisors who deeply understand our client's businesses but also with our strong farming roots, we have the business and life experience to offer a personal touch, which allows us to create strategies that fit your needs specifically.

And in a win-win for you and your business, all of our GST planning and filing is included in your yearly fee – no hidden surprises and no need to feel like you can't call us and be stung with a bill.

We've seen some incredible success stories since making these changes and clients who used to struggle with hefty tax bills are now saving big.

The days of once-a-year accounting are over - to succeed in today's competitive world, you need an accountant who's hands-on all year round. Don't fall into the trap of trying to save a few bucks now, only to lose out on much more later. Instead, invest in experienced accountants who can help your business flourish. At Murphy & Landrigan, we've made this shift, and it's made all the difference for us and our clients.



Carl Bates gets straight to work

Life has changed already for new Whanganui MP Carl Bates. Less than 36 hours after results were announced on Saturday night he left Whanganui in the pre-dawn darkness of Monday morning headed for Parliament.

He spent Monday meeting the Class of '23, National's new intake of MPs, and beginning his orientation to the routine and rules of Parliament. On Tuesday morning he attended the party's first caucus meeting, the first coming together of National's existing caucus and those elected on Saturday.

It will be at least early November before a coalition government is sworn in by Governor-General Dame Cindy Kiro. But that doesn't mean there's no work to do in the meantime, and Bates is under no illusions as to the size of the job ahead.

"I'm excited. It's daunting, there's a huge amount of work to be done and I don't think that can be underestimated," he told supporters on Saturday night.

After Saturday night's festivities there was no time to sleep in. After watching New Zealand beat Ireland at the Rugby World Cup Carl, Candice and their children went to church, then it was time for a quick round of Thank You human hoardings at several Whanganui intersections.

"It's fair to say that we were very well received on Sunday," Bates said. "There seems to be a real sense of relief that New Zealand will have a new government with a relentless focus on rebuilding the economy and getting things done."

There was a small window for family time on Sunday, with a party at Kowhai



Carl and the team doing "Thank You" human hoardings on Sunday.

Park to celebrate elder son Angus's fifth birthday. Bates realises however that family

time will be a precious commodity. Whanganui is a diverse

electorate, with the Whanganui District in the southern portion, and

South Taranaki and Stratford Districts to the north. A key part of Carl's tenure will be balancing competing demands on his time from different sectors of the electorate. However a rigorous eight month full-time campaign has prepared Carl well.

"My pledge to everyone in the Whanganui electorate is that I will be visible, I will turn up, and I will work on behalf of every constituent," Bates said. "I set high standards of myself, and I have a track record of getting things done, so that will not change."

Right now however there's a big learning experience going on in Wellington where the newbies from all parties are being shown the ropes. At the end of the week they will return to their homes or electorates, and the real work begins.

Carl Bates cannot wait. "Bring it on!" he says.

Climate Justice vows to continue post election

Climate Justice Taranaki is determined to continue its work for a just world where people and the environment thrive, as election results emerge.

"It is a pretty bleak election outcome for all of us, for the climate, for the poor

and marginalised. National and ACT will try to open up more oil and gas exploration around Taranaki and across Aotearoa, and do nothing to reduce agricultural emissions. They will offer tax cuts to the rich and shrink public services. Our group

is committed to organising a campaign of nonviolent direct action with our friends and allies to oppose further fossil fuel exploration," said Urs Signer of Climate Justice Taranaki.

"We are happy for the Greens and Te Pāti Māori.

But in general the shift to the right is bad bad news for our people and Taiao, in the midst of a climate crisis and a global rise of far-right fear and greed, as economies slowly implode and desperation grows. Now is not the time to run and hide, nor to get

nasty. We are going to have to draw on some deep inner strength, hold loved ones close and work hard to help politicians and communities make decisions that will help everyone and not widen the divisions," said Tuhi-Ao Bailey, member of Climate

Justice Taranaki.

"We need to be active and get more people involved in climate action. Plenty of people across the community are keen on a wealth tax and climate justice. Let's use our frustration to mobilise," said Signer.

Health workers vote to accept pay equity settlement

The pay equity claim for roughly 16,000 Allied, Public Health, Scientific, and Technical health workers has been settled which will deliver 20% salary increases for most people covered.

The Public Service Association Te Pūkenga Here Tikanga Mahi represents 11,500 of

roughly 16,000 Allied, Public Health, Scientific and Technical workers across Te Whatu Ora. In an unprecedented ballot, 99% voted to accept with 82% of eligible members having their say.

"This is a significant step toward a fairer future for healthcare where everyone's

work is valued for what it's worth," says PSA National Health Lead Sue McCullough.

"It is an historic justice to see pay corrections after nearly five years of organising for this claim, and many more years of Allied workers being paid less because work done by women is

undervalued," says PSA Delegate and Allied Social Worker, Natalie Agarkov.

The settlement includes an interim pay adjustment backdated to 30 November 2022 and lump sum payment of up to \$10,000. People working in more than 120 professions are covered including social workers,

hospital dental assistants, and sterile sciences technicians.

"This settlement means more experienced clinicians will stay working in healthcare, more accessible holistic and specialist care for communities, and more choice and freedom for people pursuing health

careers," says PSA Delegate and Allied Occupational Therapist, Dianna Mancer.

"I'm so pleased health professionals will receive pay that reflects the skills, responsibility, and demands

Continued page 9.

Thank you for your support!
Now let's get to work

David MacLeod
 New Plymouth Electorate



Authorised by D MacLeod,
 37 Gill Street, New Plymouth

Thank you for your support
Whanganui Electorate

Carl Bates
 For Whanganui Electorate



Authorised by Carl Bates,
 52A Victoria Avenue, Whanganui

Rest in Peace Dr Tom

Dr Tom Mulholland, a popular GP who went on to be a mental health campaigner, writer and motivational speaker has died at the age of 61.

Known affectionately as "Dr Tom" he had graduated from Otago Medical School in 1989 and said he had been interested in mental health since his time as a student.

He spent 17 years in Taranaki, having been drawn here he said by his love of mountains and surfing. While in Taranaki he was an Orthopaedic and General Surgical Registrar, gained a Diploma in Sports Medicine and founded Taranaki's first Accident and Medical Clinic White Cross.

He was a GP in Okato and was chair of the Okato School Primary School board of trustees before



Dr Tom Mulholland.

becoming the first chair of the board of trustees of Coastal Taranaki School. He was on the District Health Board and was doctor for the Taranaki rugby team.

He was also an Emergency Department Doctor and GP for over 25 years and practised from an Auckland Hospital, rural New Zealand towns, the Chatham Islands and worked in the Antarctic, Arctic and Indo-Pacific as a ship's doctor and expedition leader.

In later years he would tour the country in a Chevrolet V8 ambulance transformed into a medical pop-up clinic promoting the mental health message.

He was the author of books with titles like "The Power of Healthy Thinking" and "Healthy Thinking: How to turn life's lemons into

lemonade." He was also much in demand as a speaker and broadcaster.

The Opunake and Coastal News spoke to him in 2015. He was travelling the country with Farmstrong pushing the farming mental health message, providing healthy thinking workshops, dealing with subjects like coping with pressure and fatigue, understanding emotional alarms and the importance of taking the occasional break from the farm.

At Mystery Creek, his pop-up clinics attracted considerable interest, with seventy farmers having health assessments.

Two were diagnosed with diabetes, and 14 were at a high risk of developing it. Nine had high blood pressure, with one dangerously high. Nineteen

had high cholesterol.

"Farmers live in an isolated environment, and some people don't get off their farms for a couple of weeks," he told the Opunake and Coastal News (July 3 2015). On top of that, there are the stresses associated with things that come along like weather events and having to deal with a low dairy payout "We try to be an ambulance at the top of the cliff, and give the tools to fertilise the top paddock. As a GP in Okato and Opunake, I saw cases where we were the ambulance at the bottom of the cliff."

Tom Mulholland had a house in Coastal Taranaki and continued to take an interest in the area.

Help kick breast cancer to the kerb

Local Pink Ribbon volunteer urges others to help kick breast cancer to the kerb

A Taranaki local is heeding the call to "kick breast cancer to the kerb" this October by collecting for Breast Cancer Foundation New Zealand's Pink Ribbon Street Appeal, and she's encouraging others to take part too.

Moana Phillips-Edwards

will be one of 10,000 volunteers hitting the streets all over New Zealand on Friday 27 and Saturday 28 October, raising vital funds for breast cancer research, education and patient support. Moana had been determined to help Breast Cancer Foundation NZ in honour of her four aunties diagnosed with breast cancer in the last

25 years, three of whom sadly passed away.

Little did Moana know she was to be diagnosed with breast cancer herself in September, having a double mastectomy at the end of the month.

Moana says: "With the support I have received to date, I will face this demon and own it like a boss."

Breast Cancer Foundation NZ is still looking for more people in Taranaki to sign up for a two-hour collection shift. The Foundation's chief executive, Ah-Leen Rayner, says: "The Pink Ribbon Street Appeal is one of our biggest fundraisers and it couldn't go ahead without amazing volunteers like Moana.

"As a charity doing vital

work to stop Kiwis dying of breast cancer, we rely entirely on the goodwill of generous New Zealanders. By contributing just two hours of your time, you'll be making a massive difference to help us to kick breast cancer to the kerb this Breast Cancer Awareness Month." Every year, around 85 women are diagnosed with

breast cancer in Taranaki. All of the money raised from the Pink Ribbon Street Appeal goes towards Breast Cancer Foundation NZ's work to advance breast cancer research, educate Kiwis about the importance of early detection, and support patients through their treatment and recovery.

Survey reinforces importance of a funeral for mental health

The Funeral Directors Association of New Zealand is reminding New Zealanders of the importance of a meaningful farewell for managing their mental health.

It comes after a recent survey of grief counsellors, conducted by the Grief Centre, shows that not having some kind of meaningful farewell has an overwhelmingly negative impact on the grief journey. Funeral Directors Association of New Zealand Chief Executive, Gillian Boyes says her members have always known their

families can better manage their way through the early stages of grief when they have an opportunity to say a proper farewell.

"The rituals associated with a funeral; the viewing of a person, choosing and carrying a casket that represented them, lighting candles, singing songs and remembering someone with tributes and stories are all important steps for a family in those early days," says Ms Boyes.

"A funeral doesn't have to be a staid traditional affair. Our members can create unique experiences that fit

with what a family wants and needs. We know recognising a person, in whatever way works for a family, can have a positive impact on the mental health of family and friends."

Katrina King, General Manager of the Grief Centre, says, "Our counsellors often see that when a life is not farewelled and celebrated appropriately, however that might look, it negatively impacts the grief journey and can add another layer of loss or complexity.

"Mourning is the external expression of grief and sharing that with others is a

very therapeutic process", says Ms King.

Ms Boyes notes that while the survey results confirm their anecdotal knowledge, cost constraints are forcing families to choose different ways of celebrating a life.

"However, there are a number of costs you can't avoid like burial or cremation costs and for New Zealand's most vulnerable, the Government support to

help with those fixed costs is woefully inadequate.

"We know the Work and Income New Zealand funeral grant at \$2445.37 covers less than a third of the cost of a modest funeral with a cremation.

"It leaves families with little option but to make choices like having to have an unattended cremation. We believe it's short-term thinking by the Government

that only increases the likelihood these families will rely on Government support for mental health instead down the track."

The next issue
of the
Opunake &
Coastal News is
on Nov 2.

Health workers vote to accept pay equity settlement

Continued from page 8.

of the work. Pay equity will make a huge difference to keep up with the cost of living, like paying for dentist appointments and keeping the house warm," says PSA Delegate and Allied Social Worker, Fionn McKenzie.

While this is a significant step, pay equity claims for other health workers are yet to be resolved - including the claim for 65,000 care and support workers.

"The new Government must continue unsettled pay equity processes with haste to ensure all health workers are paid fairly," concludes

McCullough.

The PSA acknowledges Te Whatu Ora, outgoing Minister Ayesha Verrall, and former Green MP Jan Logie, and Green Party Co-Leader Marama Davidson for their important roles in achieving this settlement.

Relentless war

The World War I letters of Corporal Arthur J. Gilmour of Manaia, Taranaki

By Natasha McKinney, Curator/Poutiaki, Puke Ariki

June comes and the European summer brings no respite for Arthur and his fellow soldiers. In this letter to his mother, it does not appear Arthur has yet been on leave to England or beyond to Scotland as he had hoped. Duties and fighting in the trenches have kept him very busy, and he is yet to see even more dramatic battles.

One thinks of his student days back in Otago when

Arthur wrote home about enjoying exercising at the new swimming baths. Here in France he recounts the rarity of a hot wash, and the chance for a change of clothing.

At this point in the war, the escapades of Taranaki soldiers were regularly reported in the local newspapers. News of another soldier's death has reached Arthur via his parents at home in Manaia. Remarkably, Arthur is able to report on three of his cousins who are fighting with him in France – Gordon Stoddart, Boyd, and Willie Reid.



Arthur J. Gilmour of Manaia. PAColl-9454-01, Alexander Turnbull Library, Wellington, N.Z.

North of France
6th June 1916

My dear Mother,
I was very pleased to receive letters & papers recently. I was sorry indeed to hear about Douglas Candy's death.

I saw Gordon the other day, Boyd & I went along to visit him and he is well. He said that he had had his share of shells etc. Leonard is away in Scotland, he was operated on for appendicitis; he can

consider himself lucky to be out of here.

We are going into the trenches again to-morrow night & this will be my second time in. Of course we are up there nearly every night on fatigue & are getting weary of it as we miss our night's sleep.

7th June

We did not have to go out at all last night so am now feeling quite fresh again. Tell Father that Claude Rollett is sleeping in the same billet as me, he sends his kind regards to Father.

Boyd & I went for a walk together last night, we have not heard from Willie for a week or two. We have had a little rain during the last day or two but it has cleared up again. Hal Don & Don Green are both here now & I had a yarn to them the other day. Went for a swim in the cold water baths last Sunday; they were the biggest baths I have ever seen. One day last week we were all taken for a hot bath & change of underclothing which we greatly appreciated. I must say good-bye just now.

I remain, Your affectionate son, Arthur.



Gordon Stoddart, A.J. Gilmour's cousin. PHO2023-0055, Collection of Puke Ariki.

Music plagiarism: trial by algorithm?

A New Zealand

musicologist says that while algorithms won't replace juries in cases of alleged music plagiarism, they could be useful tools for consideration in court and help musicians avoid releasing songs with unintended similarities in the first place. Researchers

asked 51 people to judge 40 examples of alleged music plagiarism and compared them with algorithmic assessments and court decisions. Study participants' assessments matched the court decisions in as much as 83 percent of the cases versus 75 percent

for the algorithms - though it's important to note that some court decisions were highly criticised by musicians, musicologists, lawyers and judges alike.

Transactions of the International Society for Music Information Retrieval

Stone Creations NZ

Small & Large Memorials, Plaques and Memorial Restoration
Serving Taranaki & NZ for 25+ years
www.stonecreations.nz

It's a difficult time choosing the right memorial for your loved one. Dealing with an experienced Monumental Mason from the initial contact right through to installation, you can be assured of the highest standard of workmanship.

At Stone Creations NZ we offer products that range from the smallest of plaques to large memorials. You are only limited by the requirements of the cemetery, your budget and your imagination as we can provide any type of granite memorial you require, as well as bronze, chromed and photo plaques.

We use the latest technology to undertake all types of memorial work. We are approved heritage contractors to DOC and provide community services projects at a competitive price.

Showroom & Creative Centre

310 Dover Rd, Surf Highway 45, New Plymouth | 0508 763 8437

Furniture Zone

make your house a home

NEW RANGES NEW PRICES NEW SALE



f @FURNITUREZONENZ | WWW.FURNITUREZONE.CO.NZ
298 DEVON STEET EAST, NEW PLYMOUTH 4312 | (06) 215 3020

*TERMS AND CONDITIONS APPLY WHILE STOCKS LAST IN-STORE

TransAg Centre Ltd.

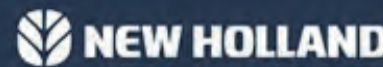
AGRICULTURE

... and proud of it



STRONGER
THAN
EVER

SPECIAL PRICING AVAILABLE



NEW PLYMOUTH

65 KATERE ROAD

PARTS/SERVICE: 06 758 2274

SALES: PAUL STANTON 027 498 7277

HAWERA

16 GLOVER ROAD

PARTS/SERVICE: 06 278 5119

SALES: RAYMOND 027 444 8861

Act of heroism to be remembered 81 years later

An Opunake airman killed in a World War II bombing mission will be remembered next month in a ceremony in the Netherlands.

The ceremony will take place at Vaals near the border with Germany on November 9 which would have been Laurence Dobbin's 108th birthday.

Flight Lieutenant Laurence Dobbin was the pilot of Vickers Wellington BJ 767, one of nine New Zealand bombers bound for Mainz Germany on the night of August 11-12 1942, when they were buzzed by a German Messerschmitt 110 night fighter.

Wireless operator James McQueen reported to Dobbin that there was "oil or something" burning in the bomb bay.

The order was made to jettison the bombs. When that couldn't be done Dobbin ordered everyone to bail out. Sergeant Jack Jury was having trouble with his parachute so Dobbin ordered everybody else out. Meanwhile he and Jury would stay and he would try to crash land the aircraft. The bombs in the bomb bay exploded before they could do this, destroying the plane and killing both of them.

Seventy years later Dutch local historian Dolf Baltus told Dobbin's great nephew Steve Reed that after the encounter with the Messerschmitt the bomber had been hit by anti-aircraft fire.

Dobbin left a wife, Marjorie who he had married eight days before being shipped overseas. It was



Flight Lieutenant Laurence Dobbin (9 November 1915-12 August 1942).

average. A schoolteacher, his parents had farmed at Oaonui. He attended Opunake District High School before training at Auckland Teachers Training College and studying for a BA at Auckland University College. He represented Taranaki at rugby and had been a boxing champion at teachers college and university.

His name is commemorated on a plaque at the Opunake Services Cemetery, as well

last year after being told of a newspaper clipping about the visit Steve Reed had made back in 2013 to try to find out where his great uncle's Wellington bomber had crashed.

After a bit of detective work Bas was able to track down where it happened. He made contact with family of the crew members, including Laurence Dobbin's nephew Murray Dobbin and put together an account of what happened to BJ 767.

a memorial and a plaque with the names of the crew members at the site where the plane went down.

There will also be a QR code with a link to Bas' account of the crash.

Bas says it was hoped to have the ceremony on August 12, the anniversary of the crash, but this was during the school holidays and they wanted to have the local primary school involved in the ceremony.

"We wanted to let the school take part in it because it is important to tell the whole story to the younger generation and because Laurence was also a teacher," says Bas. "Then I remembered the birthday of Laurence as 9th November, and that was fitting for the whole story of Laurence and Vaals."

Students at the primary school have been learning about the crash and will unveil the memorial. One of the students will recite a poem.

"All the people who walk or bicycle there and are going to sit and rest on the bank will see what happened there," says Bas. "It is a very beautiful place. Murray says that it looks like the area where Laurence lived. So also, this fits well."

After Laurence's death, Marjorie received a letter from Wing Commander Victor Mitchell.

"Although with the squadron for only a short time, your husband had settled down quite happily and had become a popular

member of the mess, for he was ever cheerful and friendly," he wrote. "He was a splendid pilot and an efficient captain of aircraft, constantly displaying great keenness, courage, and determination. His loss is indeed a heavy blow to the squadron, to the service and to the great cause for which

he so nobly fought and so gallantly laid down his life in action."

Like Laurence Marjorie was a teacher and she continued to teach, moving to Christchurch and becoming a school principal. She never remarried.

SCHURR IRELAND
CHARTERED ACCOUNTANTS

NEW PLYMOUTH **ELTHAM**
p. 06 759 0105 p. 06 764 8305

www.schurreireland.co.nz

ELTHAM
BUILDING SUPPLIES

Cabinet Making, Glass Supplies & Custom Joinery Solutions

Donald & Ian Murray

☎ 06 764 8616 📞 027 242 8379
📞 027 348 9445

136 High Street, Eltham
eltham.bs@gmail.com
www.elthambuildingsuppliers.co.nz



The site in the Netherlands where a memorial service will be held on November 9.

Laurence's second operation as captain and pilot. He had been well thought of and while training to be a pilot he had been rated above

on the Roll of Honour at the Oaonui Hall and at Opunake High School.

Dutch historian Bas Bruls got interested in the crash

On November 9 there will be a ceremony to unveil

LAWYERS

OPUNAKE LAWYERS
Thomson O'Neil & Co.

Our Opunake Office is attended by:

Robert England on Wednesday & Fridays
for buying and selling houses, farms & businesses; Trusts, Wills and Estates.

Mark Utting on Thursdays
for buying and selling houses, farms & businesses; Trusts, Wills, Estates and refinancing matters.

FOR ALL YOUR LEGAL REQUIREMENTS
30 TASMAN ST, OPUNAKE
PH: 761 8823

Seed potatoes available - limited supplies

Lynne & Peter Newell
p/f: 06 278 8148
Lynne m: 021 142 5050
peter m: 027 443 6927
e: gardenedge2010@gmail.com
52 Fantham Street, Hawera

67 Breakwater Rd (up Norma's Way) • NEW PLYMOUTH • PHONE 06 751 5065
FAX: 06 751 5085 • WWW.NEWTONGORDGE.CO.NZ

ALL DOMESTIC & COMMERCIAL JOINERY

• Kitchens • Stairways • Vanities • Lounge Units • Bench Tops • And More

National and Labour commit to greyhound racing ban

In a landmark moment for animal welfare, both the Labour and National party leaders pledged to ban greyhound racing during the 1News Leaders' debate.

In response to the question "should greyhound racing be banned," Labour party leader Christopher Hipkins replied "Yes. It's

time," and National party leader Christopher Luxon responded "Yes. There's a review coming and I think that's the place to be. Yep."

SAFE Campaign Manager Anna de Roo says this is a momentous occasion and a win for greyhounds everywhere.

"New Zealand is one of only a handful of countries

to legally allow commercial dog racing," says de Roo.

"For decades greyhounds have been injured and killed in the name of entertainment but the tide is going out on animal cruelty."

Public opinion firmly supported a ban, with an independent poll showing 74% of New Zealanders would vote to ban greyhound

racing in a referendum.

"Tens of thousands of New Zealanders signed the petition and emailed the racing minister in support of a ban. Many companies also withdrew their sponsorship after learning of the realities of the industry."

"The resounding 'Yes' from both party leaders is a clear acknowledgment

of the overwhelming public support to protect greyhounds."

The latest review of the industry conducted by the Racing Integrity Board found that injuries continued to "trend upwards," and stated that "many of the concerns are as relevant today as they were 10 years ago." The final decision will

be made by Cabinet after the election.

While it will take time to translate the ban into law, SAFE says that the political leaders' comments are heartening.

"This commitment reflects a growing compassion for animals and a desire to put an end to an industry rife with harm."

SAFE slams light sentence

Animal rights organization SAFE say they are deeply disturbed that mass animal starvation has only resulted in a fine.

A Ruawai farmer was sentenced after nearly half of the farmer's 840 animals were found to be in poor health, suffering from diarrhoea and "emaciated." The farmer was also told to euthanise a "severely lame" bull, but had failed to do so after a week, saying it was because he "could not find the animal."

The farmer was fined \$30,000 but has not been disqualified from owning animals.

SAFE Campaigns Manager

Anna de Roo says it is just the latest case in which the Ministry for Primary Industries (MPI) has allowed suffering to continue.

"In their own words, MPI allowed a severely lame bull to suffer for over a week in the farmer's care, despite determining that immediate humane euthanasia was necessary," says de Roo

"We have been sickened to see multiple cases of mass animal starvation resulting in only fines. Animals in New Zealand must be protected from this kind of negligence and the only guaranteed way to do so is to ensure perpetrators

are banned from owning animals."

This case follows a string of severe animal abuse cases with astonishingly light penalties.

In April this year, a Canterbury farmer was ordered to pay \$3975 and disqualified from owning cattle for five years after 610 calves died from starvation. In May 2023, a Horowhenua farmer was fined \$32,000 after 29 cows starved to death, but the farmer was allowed to continue farming animals.

"Even more extraordinary, two young men who confessed to shooting and killing a bull with a

crossbow were discharged without conviction in June 2023."

"Animal welfare authorities like MPI must address

these issues promptly and decisively. But these cases prove that animal welfare reform is needed."

"Aotearoa urgently needs a

Commissioner for Animals to address the shocking state of animal welfare monitoring and enforcement on farms."



LEFT: One bull that no one would dare to mistreat.



Corkill SYSTEMS LTD

5 TASMAN ST, OPUNAKE
FREEPHONE: 0800 107 006 PH: 06 761 7531 - FAX 06 761 7336

Silent Diesel and Industrial Tractor Mount Generators

For Dairy Sheds, Houses, Pump Sheds and Commercial Sites

Tractor Mounts Features:

- Supplied with weather proof cover
- Dials facing cab (one man operation)
- Heavy Duty Driveshaft
- Heavy Duty Construction
- 1000RPM Direct PTO Driven (no gearbox or belts)
- Backup and Repair Service for all Generators



Sizes to suit all situations
A full range of cabling and outlet options to suit your personal requirements



Check out our new website
www.corkillsystems.co.nz

Phillip Joblin

KITCHEN & FURNITURE




25% OFF*

RRP ON FISHER & PAYKEL & HAIER KITCHEN APPLIANCES




*T&C apply for details visit our showroom or website, or give us a call today!

3 Mawhitiwhiti Road, Normanby
phillipjoblinkitchenandfurniture.co.nz
06 272 8174 | 021 0473 493



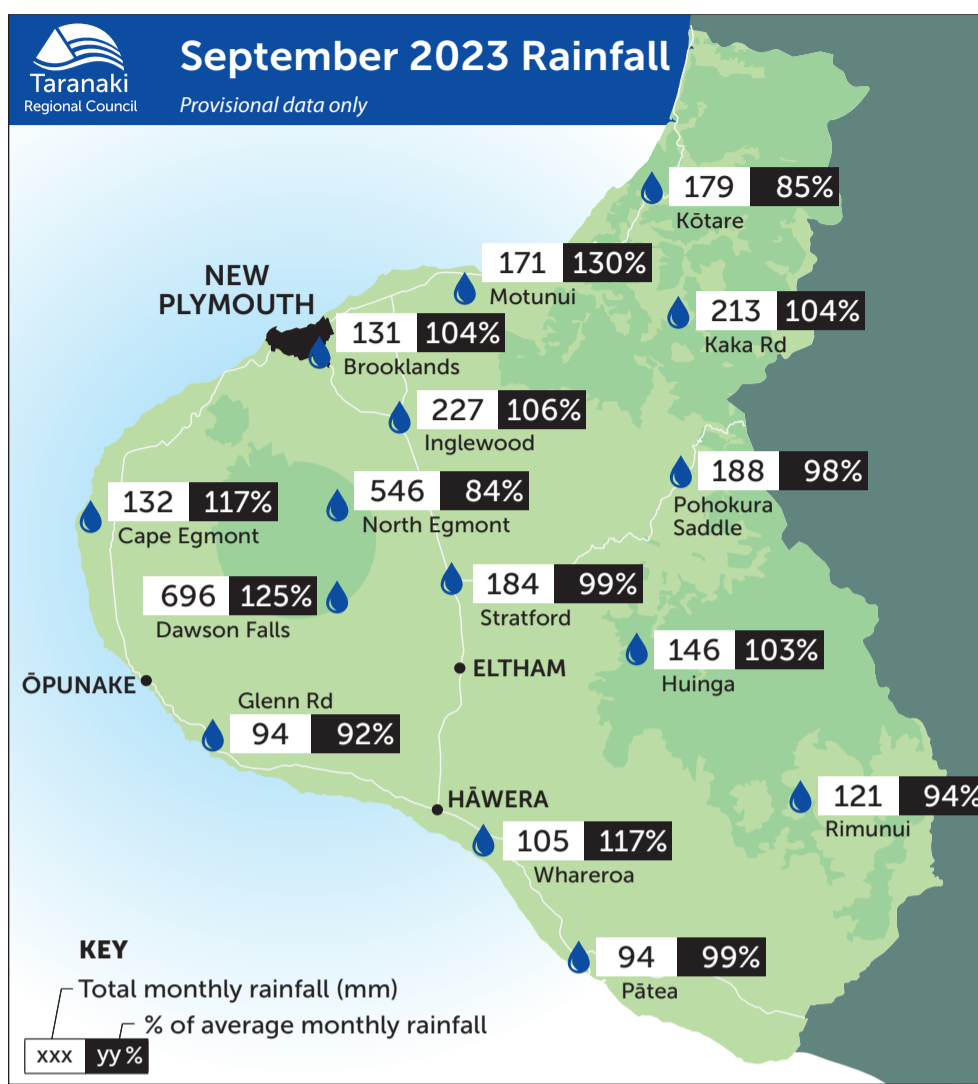

Average September weather for Taranaki

On average rainfall for September was 158.5 mm, 3% more typical September rainfall, and ranging from 15% less rainfall at Kotare at OSullivans, and 30% more rainfall at Motunui than a typical September, according to Taranaki Regional Council (TRC) figures.

Year to date rainfall ranges from 11% less rainfall at Uruti at Kaka Rd, and 14% more rainfall at Tawhiti at Duffys, with an average of 1% more than normal. Compared to typical full year totals, on average sites have already received 75% of a typical year's rainfall, with the highest value at Omaru at Charlies, 85% of normal, whereas Uruti at Kaka Rd sits at 64% of the typical years total.

Mean river flows for September were 31.5% lower than typical values, low flows were 8.8% lower, and high flows 25.5% lower than typical values. The maximum river flow recorded in September was 436 m3/sec at Waitara at Bertrand Rd.

Mean river (non-mountain) water temperatures were 11.6°C, an average of 0.3°C warmer than long-term September values. Nighttime-low water temperatures were on



average 0.3°C warmer than historic lows, and daytime high temperatures were on average 0.2°C warmer than historic highs.

The maximum river water temperature recorded in September was 17.6°C at Kapoiaia at Lighthouse. The average air

temperature for the region (excluding Te Maunga sites) was 11.5°C, which is 0.9°C warmer than long-term September averages.

Low air temperatures for September were on average 0.9°C warmer than the September average for previous years. Day-time high temperatures were on average 1.3°C warmer than historic highs. The maximum air temperature recorded in September was 21.8°C at Weraweraonga at 749 Mangawhio Rd.

The average soil moisture for September across sites in Taranaki region was 33.8%. Soil moistures were on average 0.2% drier than typical September values. On average, low soil

moistures were 1.9% wetter than previous lows, and the highs were on average 2.2% drier than previous values for September.

September soil temperatures were generally 0.8°C warmer than long-term averages. Average nighttime low soil temperatures were 0.5°C warmer than recorded lows, and upper day-time soil temperatures were on average 0.6°C warmer than long-term September highs. The maximum soil temperature recorded in September was 19.3°C at Kapoiaia at Lighthouse.

TransAg Centre Ltd.
 AGRICULTURE
 ... and proud of it

KEEP MOVING FORWARD WITH CASE IH.

SPECIAL PRICING AVAILABLE

NEW PLYMOUTH
 65 KATERE ROAD
 PARTS/SERVICE: 06 758 2274
 SALES: PAUL STANTON 027 498 7277

HAWERA
 16 GLOVER ROAD
 PARTS/SERVICE: 06 278 5119
 SALES: RAYMOND 027 444 8861

Plastic-eating bacteria can give waste a new life

International researchers have genetically engineered two synthetic bacteria they say can help turn plastic waste into more useful chemicals.

The two bacteria strains

come from the soil bacterium *Pseudomonas putida*, and the researchers say they can process the common plastic polyethylene terephthalate and create terephthalic acid and ethylene glycol.

These two products can then be used in the production of materials used in insulators, foams, coatings, adhesives and nylon, they say.

The researchers add

that their results show the possibilities of engineering bacteria to create new options for sustainability.

Nature Communications

Servicing the lower North Island with a Fleet of Silo / Auger trucks.

Top Fill - Bottom Fill - Blower Trucks

For a competitive quote phone
0800 707 404 – option 1

SANDFORDS RURAL CARRIERS

Wildfire risk in El Niño

Windy, hot and dry weather will be more likely for regions in Aotearoa this summer. So what does this mean for the nation's wildfire risk?

The climate pattern known as the El Niño–Southern Oscillation, or ENSO for short has been officially declared by NIWA. With ENSO the country will see dramatic temperature swings and stronger than usual winds. Prevailing westerlies may lead to prolonged dry spells in the north and east of both islands as summer progresses.

Hugh Wallace, Team lead for Fire and Atmospheric Sciences, Scion, comments:

“It’s difficult to predict all the way until the end of the season, but between now and early December we’re expecting El Niño to cause average or slightly above average fire conditions for

New Zealand.

“These increased conditions mean it’s more possible for fires to start or spread, but don’t say whether or not they will actually happen (whether or not fires happen in New Zealand is almost totally determined by the actions of the public).

“The effects of the El Niño are likely going to be seen in the form of erratic and gusting westerly and north westerly winds, with increased fire conditions most likely seen along the east coasts of both the North and South Islands. The east coast is likely to see the greatest increase in potential fire conditions because westerly and north westerly winds are likely to drop the moisture they are carrying in the form of rain or dew as they reach the west coast and

cross land, before arriving on the east coast as warm dry winds. These warm, dry winds can dry out fuels like grasses and scrub making them easier to ignite (even a few days after rain) and drive existing fires at high speed. If the strong El Niño westerly winds continue to drop their moisture on the west coasts we could see drought conditions develop in the east later in the summer.

“Rather than focussing on specific at-risk areas, people should think about at-risk conditions and their own behaviours that might cause fires.

“In terms of conditions, most people intuitively understand that hot dry conditions are dangerous, but with El Niño people need to be thinking about windy conditions as well. In these

situations, fine fuels like grasses and scrub can dry out enough to burn in hours or days after rain and often catch people by surprise. Windy conditions also can stir up days to weeks old burns that haven’t been properly extinguished (e.g. by thoroughly flooding with water and mixing with hand tools or heavy equipment) so they reignite and escape, usually when unattended. Because these winds are caused by the El Niño and not normal weather patterns, they are also somewhat unpredictable so people may be caught by surprise.

“In terms of behaviours, with the last several years being wet people are likely to be more complacent and not be thinking about fire when they’re doing things like mowing or doing machinery work in flammable areas.

With strong winds, fires can often ignite and escape before a person is even aware of them, never mind able to react and start putting them out.

“Regarding wilding pines, from a purely fire perspective (totally ignoring ecosystem impact) pines are most problematic if they are grown close enough to something we care about to put it at risk. This risk can be directly caused by them growing close enough to an object to catch it on fire, or indirectly by growing in along roads and access tracks to make reaching those areas unsafe by cutting off escape routes. This is true of all fuels (native and invasive), just wildings spread and grow faster than most large native plants so take more effort to manage.

“With winds being the

big driver of potential fire behaviour early in this El Niño season, fine fuels like grasses and scrub are my big concern in the short term. Fires in fine fuels are easy to ignite, and often spread quickly. If we get an extended drought later in the season, we may see larger fuels like trees become available, but it’s too early to say whether that might happen (though it’s likely in my opinion).

“As a final take-away: Almost all fires in New Zealand are human caused. Even under extreme conditions, fires in New Zealand are extremely unlikely to happen on their own, so how we choose to behave and what we choose to do when it’s hot, dry, or windy has a huge effect on whether a fire starts.”

New director elected for DairyNZ

North Canterbury farmer Cameron Henderson has been elected to the board of DairyNZ. His election was announced at the DairyNZ AGM in Te Awamutu. Two of the five farmer-elected positions were being contested, including that of DairyNZ chair Jim Van der Poel who was re-elected.

There were 13 nominations for the two positions which was decided by the Single Transferable vote system. Among the candidates was Te Kiri farmer Shane Ardern, a former MP for Taranaki-King Country and former chair of the Parliamentary Primary Industries Select Committee.

Jim Van der Poel thanked outgoing director Colin Glass who had not sought re-election.

“Colin made an outstanding contribution with his expertise and support for the past six years being invaluable—particularly



Cameron Henderson.

through a period of massive change in the sector.”

“There is no doubt that it has been a challenging year, but despite this our farmers remain committed to delivering for their teams, families, animals and land. We produce world class products and should be incredibly proud of that.

“We also continue to work hard to find fair and practical solutions on issues that matter.”

Cameron milks 750 cows on 240ha near Oxford, North Canterbury and also leases 250ha for dairy support and arable.

He has been provincial president of Federated Farmers and sits on the board of Balance Agri-Nutrients. He has also been on the He Waka Eke Noa Steering Group.



Jim Van der Poel.

Kubota

Norwood

M7
VERSATILE
HARD-WORKING.

4.00%
PA

FINANCE
FOR 48 MONTHS*

KUBOTA NEW ZEALAND FINANCE

See us in store to find out more.

Norwood Hāwera
283 Waihi Road | (06) 278 6159

Norwood New Plymouth
146 Gill Street | (06) 757 5582

*This finance offer from Kubota New Zealand Limited is only available to eligible business applicants on loans with a term of up to 48 months. The 4.0% p.a. interest rate is fixed for the term of the loan and is only available with a minimum of 20% deposit and applies to new Kubota M7 Series products. Credit criteria, fees, terms and conditions apply.
The finance offer is valid from 1 September 2023 to 30 November 2023.



How to Stir an Effluent Bladder Tank

Managing your dairy effluent bladder tank requires a few key steps to ensure it runs efficiently and reliably for a long time.

Remove stones and sand
In order for a bladder tank to run effectively, it needs to have the sand, stones and grit removed from the effluent stream before it reaches the tank. Utilising stone traps are a vital part of an effective effluent system to remove any grit that may interfere with the drainage of the bladder.

If a few stones and grit do manage to enter the effluent bladder, there are solutions to removing them without causing issues with the storage capacity. Bladder tanks are able to manage some heavy solids when stirred into suspension. With adequate mixing, heavy solids are able to be pumped out the same way they entered the tank.

Stir with the multiple ports

It is critical that the bladder tank is thoroughly stirred before sucking any fluid out and irrigating out to paddocks. Bringing the effluent into suspension helps avoid heavy sediment building up on the base of the bladder and over time making it difficult to mix in the future. Nevada bladder tanks are designed with a flat bottom and include multiple ports around the edges that



A bladder tank's stone trap sump.

are easily accessed.

To adequately stir the tank, utilise the ports around the bladder by sucking effluent out through one port and pumping it back into the bladder through another port with a high-volume effluent pump. This will create a swirling motion that brings it all into suspension. Switch to the opposite side to work around the different ports to make sure the tank is adequately stirred before irrigating.

On average, a bladder tank should be mixed for a

minimum of 30 minutes to an hour, but it may take longer if the tank has been left stagnant for several months. We recommend stirring thoroughly every time before the tank is emptied or any fluid is sucked out.

What type of bladder tank works best?

Some brands on the market have a central discharge port that is located lower than the rest of the tank, but this can cause issues with mixing and blockages with sediment collecting at the lowest point. It is best to have a flat

bottom bladder tank where solids are not easily trapped anywhere on the base of the tank and that can work easily with a pump mixing system.

What type of pump is required for mixing?

There are many variations when designing an effluent bladder tank system. What type of pump is required depends on the size of bladder chosen, as well as the specific flow requirements for the irrigation system. Generally an irrigation pump is not adequate to handle effluent stirring as they are not high enough volume, which is why we recommend using a high-

volume PTO effluent pump.. If a PTO effluent pump is not available, then a very large capacity motorised trash pump could be an option.

Chat with us about your specific needs for effluent storage and mixing

Designing an effluent system for your dairy farm takes careful consideration for the size of tank and the specific pumping requirements to manage flow for irrigation. Chat with our team today to learn more about how your dairy farm can run efficiently and reliably for a long time with the right effluent management system.

Nevada.

JUST TYRES

DIRECT TYRE IMPORTERS

NEW TYRES - NEAR NEW TYRES - PUNCTURE REPAIRS - FITTING & BALANCING - 4x4 - LIGHT TRUCK & CAR TYRES

SILAGE TYRES

FREE DELIVERY

(Conditions apply)

20 Smart Rd, NP | 06 769 5344
36 Glover Rd, Hawera | 06 278 3053
justtyres@xtra.co.nz

NZ FARMERS LIVESTOCK

For all your
Livestock requirements
Servicing the Coast

Contact

Bryan Goodin - 027 531 8511
Sheldon Keech - 027 222 7920



Nevada bladder tanks include multiple ports that are easily accessed.

HIRE THE LORD OF THE TREE RINGS



TARANAKI'S LARGEST MOBILE LOG SPLITTER!

Splits more than 50 cu/m in 8 hours just about anywhere on your farm.

Lifts and splits massive rounds straight onto your trailer.

\$200 per hour + GST including operator.

FOR MORE INFO, CALL JOE GOODIN
TEL: 027 688 5372

NZ's specialist provider of
DAIRY EFFLUENT MANAGEMENT SYSTEMS

0800 464 393 | nevadagroup.co.nz

 **nevada**[®]
Sustainable Effluent Management

Bulls to face Magpies in finals clash

The 2023 Bunnings Final between the Yarrows Taranaki Bulls and Hawke's Bay will be played at 2.05pm on Saturday October 21 at Our House, Yarrow Stadium.

New Plymouth hosted its only other topflight final in 2014 when the Amber and Blacks secured a 36-32 win over Tasman to claim their first ever national title.

The Yarrows Taranaki Bulls and Hawke's Bay have not met during the 2022 or 2023 regular season. Their last encounter was the historic sold-out clash at Pukekura Park won by the home team 33-19.

Taranaki Rugby Chief Executive Mike Sandle expected a capacity crowd of 13,000 and he encouraged fans to get in early to ensure they don't miss out on a seat.

"This will be a classic clash between two proud provinces and this final has generated excitement

through not only in Taranaki but also Hawke's Bay. The Yarrows Taranaki Bulls players felt the vibe from our vocal home crowd on Friday night against Canterbury and the support certainly helped us to get over the line. The team started out the season wanting to earn respect and to make the province proud. With a large contingent of Hawke's Bay supporters expected we would love nothing more than to see the ground packed out backing our boys in our bid to win the Bunnings NPC."

Meanwhile, the construction of the new East Stand has reached another landmark with the start of the pouring of concrete to create the slabs which will form the ground floor of the new building.

Some 400m³ of concrete is being poured this week and in early November as construction on the brand new stand moves up a gear



Taranaki rugby supporters are being urged to turn out and support the Taranaki Bulls on Saturday.

following the successful completion of below ground works.

Taranaki Regional Council Chair Charlotte Littlewood said she can't wait for the Bulls game. "This Saturday's game is huge and

we're looking forward to seeing a great crowd cheer on the Bulls.

"To have the grand final at our stadium is fantastic and a great example of the kind of big sporting events we want to see our community

enjoying at Yarrow Stadium. We'd love to see a capacity crowd of 13,000 enjoying the game this Saturday.

"At the same time, we've reached another important step on the journey to redevelop the venue with the

pouring of concrete on the East Stand. It's awesome to see the West Stand packed out for the Bulls games and we can't wait to see both stands full for other big events and matches."

Wet first round of cricket

Marist and Inglewood earned themselves a leg up in the Taranaki premier 50-over cricket after a rain affected first round.

Both sides made bonus point victories in reduced overs matches meaning they jumped to the top of the leaderboard, with the four sides who didn't play sharing two points each.

In New Plymouth, players waited at FDMC before a 25-over a side match got underway.

Winning the toss and choosing to bat first Marist's Michael Blanks made the most of an early life and went on to hit 79 at a crisp clip. His anchoring performance meant his teammates could chip in around him, most notably fellow opener Robson Chapman who made 29, and set a testing target of 170 for the College side.

FDMC's best bowler was Jack Kelsen who picked up a wicket and conceded just 26 runs off his five overs.

The FDMC chase was held together by debutant player/coach Aaron Zame, who opened the innings and made 48, while fellow player/coach Tinashé Chimbambo made 21 and



New Plymouth & Marist United opening batter Michael Blanks works the ball away to leg on his way to a well-compiled 79 as his team got the win over FDMC.

Asher Ryan chipped in with 18.

But the runs came too slowly and at the 10th over FDMC was already facing mounting run rate pressure at 2/21. In the end they fell 53 runs short, all out for

116, but there were plenty of encouraging signs for the schoolboys.

In Hawera, slightly better weather conditions meant play got underway not long after the scheduled start time, in a 46-over a side

match.

Sent into bat, Inglewood managed to score consistently throughout to reach 9/177.

The side would have been pleased with the efforts of club debutant Vatsal Gajjar, who top scored with 42, while Sam Darth (30) and Brent Stevens (32) also made solid contributions. Shaun Fowler proved a handful with the ball for Hawera, picking up 3/31 off nine overs.

The home side made a promising start to their chase but got the wobbles when opener Harrison Fevre (29 retired n/o) had to head off. Michael September batted well for 29 on debut but was unable to find anyone to build a partnership with and Hawera finished on 9/114 in 32 overs to give Inglewood a comfortable win. Riley Biesiek, another debutant, and Tyla Judson each picked up two wickets for the visitors.

How fruit and veggies protect against inflammatory bowel diseases

New research from the Malaghan Institute of Medical Research shows that compounds derived from eating fruit and vegetables interact with molecules that control the migration of immune cells from the blood to the gastrointestinal tract. Authors of the study say their

research sheds light on how fruit and veggies reduce inflammation in the gut and offers treatment clues for

conditions such as ulcerative colitis.

The Journal of Nutritional Biochemistry

We welcome your contributions
Please send to
editorial@opunakecoastalnews.co.nz

Value Farm Sheds

CLEARSPAN OPTIONS AVAILABLE!



Value Farm Buildings are constructed from quality materials that last at prices you can afford. Visit our [website](http://www.valuebuilding.co.nz) for full specs.





1 KATERE RD, NEW PLYMOUTH PHONE: 06 759 7435
JAMES ST, INGLEWOOD PHONE: 0800 245 535
www.valuebuilding.co.nz

Taranaki Garden & Arts Festival 2023

Taranaki Garden Festival Gardens with passion

The Taranaki Fringe Garden Festival showcases a remarkable collection of real gardens, designed to appeal to people from all walks of life.

What sets this event apart is the warm and welcoming nature of the hosts, who take great joy in sharing their passion for gardening. As visitors meander through the gardens, they are greeted with friendly faces, delightful stories, and helpful advice.

The festival proudly presents 43 private gardens this year, offering a delightful assortment of natural beauty. Additionally, visitors can explore artisan places of interest featuring exquisite jewelry, sculptures and pottery. An opportunity

to immerse oneself in the region's heritage awaits at the Hurworth Cottage, and train rides along the historic railway line add a nostalgia.

With its warm hospitality, breathtaking landscapes, and an abundance of inspiration, the Taranaki Fringe Garden Festival is an extraordinary celebration of nature's beauty and the passion of dedicated gardeners. It invites everyone, from near and far, to immerse themselves in the wonders of these remarkable gardens and create lasting memories.

We're committed to keeping things personal, and accessible. Entry to any of our gardens is \$2.00, as it was when we started 19 festivals ago.

We acknowledge and



Creekside Garden, Liz and Leo Bennett Inglewood.

thank all the supporters, volunteers, gardeners and others at the Fringe who have

contributed their time and energy to what we do and to allow us to keep prices at that level.

Our aim has always been the same - to showcase practical and inspiring ideas that people can create in their own gardens for themselves on an achievable budget.

The passion and enthusiasm of the gardeners, coupled with the remarkable quality of gardens, is truly superb.

Taranaki Fringe Garden Festival

Friday 27 October - Sunday 5 November 2023

Website: www.taranakigardens.co.nz

Facebook.com/

Fifth generation farmer enters Garden Festival



The lake which gives the Lakeside Garden its name.

A first time entrant in the Taranaki Fringe Garden Festival is Tina Worthington's Lakeside Garden near Rahotu.

Tina has been busy preparing for the festival when she hasn't been working the Mid Kahui Road farm where she milks 450 cows.

"Every spare minute I get this is where I spend it," she says.

She is the fifth generation of her family on the farm and was working as a chef in New Plymouth when her parents Rob and Gwen Willcox were looking to sell.

"I thought no way are they selling and it would end up getting lost so I packed up the family and said we're

moving to Rahotu," she said.

Gardening has always been one of her interests to which she credits her mother Gwen. Now she is preparing to have her garden in the Fringe Garden Festival, with help from family members husband Bryan, their son Daniel and daughter Hannah, and Tina's parents.

Bryan is a builder and has created a number of buildings and structures which festival goers will see and enjoy on their visit.

The Festival brochure gives the address as 800 Mid Kahui Road and a sign bearing the number in front of a former cowshed indicates where festival visitors can park their vehicles and begin their tour at the point where the garden

originally began. "When we first came here,

this was just a bare paddock," says Tina. She points to the golden elms and snowball tree which she says she is looking forward to them looking good come festival time.

The tour leads around the family home and the front garden. In the time she has been there Tina has expanded the garden to take in what had previously been paddock. Features include a fish pond which Bryan had dug out, with boulders brought in by Rob from off the farm.

A bush walk leads around the side of the house. An oak which Tina had grown from an acorn she had picked up from Taumarunui Cemetery where her grandfather's ashes

are kept provides shelter.

"I think of my granddad when I walk through here," she says.

Behind the house is the lake which gives the garden its name.

"Three and a half years ago this was just part of a paddock and that was just an old swamp which the cows didn't graze very well," says Tina.

Her father got to work with the digger to create the lake, and Tina and her mother got stuck in with the planting.

"There would be over 2000 native plants in here," says Tina.

They got approval from the Council and were able to pipe water from the nearby

Pungaereere Stream to the lake and from there to a nearby wetland. Tina says she even acquired pet eels along the way who she hand feeds.

"They came from the river through the pipes and they just stayed there," she says.

Another new acquisition is a coffee house Bryan built which overlooks the lake and wetland. From here festival goers will be served coffee, cakes, muffins and savouries and enjoy the view, which depending on the weather could include a stunning view of the maunga as well.

Tina says she has already received her first booking for a wedding, in March.

Real Gardens for Real People

Taranaki Fringe Garden Festival

27 October to 5 November 2023

Only \$2 per person, payable at each garden gate

Explore a variety of beautiful gardens

Purchase plants you've seen in the gardens

Get practical advice from garden hosts

Enjoy arts and crafts

Taranaki

[TaranakiFringeGardenFestival](https://www.taranakifringegardenfestival.co.nz)

Programme downloadable from our website

www.taranakigardens.co.nz



The start of the bush walk.

Lions fundraise in Garden Festival



Trish Anderson, Opunake Lion.

Trish Anderson (photographed) from Opunake Lions Club finished Christmas crackers for sale at Sandersons' garden near Manaia.

This is a Lions fundraiser as part of the 2023 Centuria Taranaki Garden Festival.

Unique items have been donated for this Lions project. There will be Julie Gargan's colourful paintings, some mosaic pavers, handmade soaps, delightful and wacky aprons, writing cards.

Lions members have potted up beautiful plants. Look for the potting shed at Sandersons' garden on South Road, number 1961.

Our Lions Club members, Kaye Mourie, Rachel Norgate, Trish Anderson and Kathy Stanley have worked a long time on this project.

"We are very grateful to all the kind folk who have given us their creations for this charity," says Lion Kathy Stanley.

The potting shed will be open 10am - 3pm. The first weekend is Saturday October 28 and Sunday, October 29.

The final weekend is Saturday, November 4 and Sunday November 5.

Finding scarecrows in Stratford

The famous Stratford Scarecrow Trail is back for 2023 running from 17 October to 12 November.

A much-loved annual scavenger hunt, friends and whānau are encouraged to hit the trail together to find as many of the district's scarecrows as they can. Which one will be the best

in their field?

The trail runs alongside the Taranaki Garden Festival, Fringe Garden Festival, and Arts Trail.

It's a fun, free activity that'll appeal to those visiting the region for garden and arts festivals, as well as locals who have embraced the event every year.

Scarecrow hunters can pick up a trail map and entry form at Stratford Library and Visitor Information Centre, Council's Service Centre or online at Stratford.govt.nz/scarecrow. Prizes are up for grabs for those who play.



This gorgeous Ruru was a hit at the last scarecrow festival.

TE KAHURI NURSERIES
510 Eltham Rd,
Mangatoki
06 764 5020

**TOP QUALITY TREES AT
ROCK BOTTOM PRICES**

www.tekahurinurseries.co.nz
tekahurinurseries@gmail.com

A journey of artistic discovery

At the White Sail Gallery, we invite you on a journey of artistic discovery. Whether a seasoned enthusiast or a newcomer, our gallery aims to captivate and ignite your passion. Immerse yourself in a collection featuring Taranaki and Aotearoa's artists. From exquisite sculptures, ceramics, to breathtaking art pieces. Join us in celebrating the beauty and unparalleled creativity of New Zealand's vibrant art scene in our exceptional venue. Overlooking the tranquil Breakwater Bay, our gallery is a haven for all art lovers. Come, connect,

and immerse yourself in the rich tapestry of local artistry.



Gorgeous gifts at The White Sail Gallery.

**STRATFORD
SCARECROW
TRAIL**

**27 OCTOBER TO
12 NOVEMBER 2023**

**Make it your reason
to visit Stratford in
the heart of Taranaki.**

For more info visit
[/STRATFORDDISTRICTCOUNCIL](https://www.facebook.com/STRATFORDDISTRICTCOUNCIL)

**FREE
FAMILY
ACTIVITY**

**THE CRAFTY
FOX**

OPEN
IN A NEW
LOCATION

Mon & Tues: 10am - 1pm
Rest of the week: 10am - 4pm

Ground floor - The Village Mews, Oakura (opposite the hall)

CO-OP

THE
WHITE
SAIL
GALLERY

TUES - SAT: 10AM - 4PM
SUNDAY: 10AM - 3PM

Explore a captivating boutique Art Gallery by the picturesque shores of Breakwater Bay

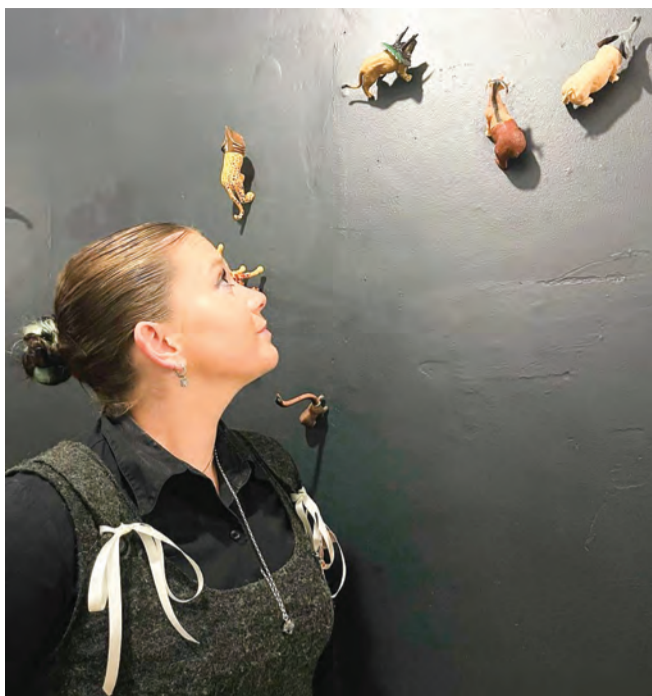
35 Ocean View Parade // Port Taranaki // New Plymouth

P: (06) 769 6689 // 0275 311 079
E: hello@thewhitesailgallery.co.nz
www.thewhitesailgallery.co.nz

Artist Portia Roper joins the Oakura Arts Trail

Eleven artists in the Oakura Arts Trail are looking forward to opening their studios to visitors. This very popular arts trail coincides with the Fringe Garden Festival and is held on the weekends of October 28-29 and November 4-5.

This year we welcome Portia Roper who is an emerging multimedia artist, born and raised in Taranaki. Interested in the interplay between collage materials, stitching and books, Portia searches op shops for treasures, particularly illustrated animal books. Full of gems and resources, op shops inspire new works and provide materials for sculptures she creates using found objects, such as plastic animals. Portia's work explores morphing animals by gradually changing them from one thing to another through merging segments, they become one. Using a variety of mediums to create her own work Portia examines the connection between collaged paper materials from books through stitching. As the animals all grow together, or merge into one body, Portia's ideas coalesce into one



Emerging artist Portia Roper.

theory. Portia loves the idea of playing with childhood memories of building your own adventure- or creature rather. Portia encourages the viewer to consider how these animals would walk and sound, what they would eat and where would they live, given the challenge of multiple animal body parts. Portia gets inspiration from the joy of people's faces

when they see these crazy, fun, creepy, and weird beings.

Also new to the trail is mixed media artist Heidi Turner who has recently moved to Ōākura from the Coromandel - Heidi creates colourful mandalas, painted stones and jewellery using natural gems.

Carmel Boone is looking forward to showing her

contemporary abstract mixed media paintings, and printmaker Kyle Boonzair joins Ross Bennett in his studio with prints and woodcuts. Artists back in the trail this year are Kris White, Margaret Scott, Richard Landers, Rosemary Petterson, Ross Bennett, Brian Clark and Suzanne Bloch-Jorgensen

An exhibition of the artists work will be on show for the week of the trail at the Okurukuru Vineyard and Bistro.

Five of the artists will open their studios for the whole week of the Garden Festival and you can check this either in the Ōākura Arts Trail Brochure or in the advert in the Fringe Festival Brochure. For details on the artists and the location of their studios go to www.oakuraartstrail.co.nz or join us on Facebook.

Visit studios of 11 local artists.

Oct 28/29
Nov 4/5
10am - 4 pm

Look for the blue and orange flags!

Find the Trail Map online at:
www.oakuraartstrail.co.nz

2023 OPEN STUDIO WEEKENDS

Gardening with Palmers Gardening Centre



It's festival time so get out into the garden

It's garden festival time. Aren't we fortunate to have this opportunity to visit some of New Zealand's most beautiful gardens right here in Taranaki? Visits to open gardens are worthwhile for both the experienced and newer gardener - offering inspiration and an opportunity to learn about planting and plants. Here are a few tips for developing and improving your garden. Firstly, make a plan and prioritise. A lawn for the kids? Vegetable garden? How big is the space? Consider a theme for your garden - a tropical look perhaps or a garden

that attracts birds, bees and butterflies. Foliage is fashionable, with interest and colour introduced through planting a selection of trees and shrubs. Carefully select what colours you want - reds, oranges, yellows for brightness or for a calmer palette, blue, silver, white. At Palmers, our experienced staff can advise you on the best plants for your garden. If you plan to plant trees, it is good to get these in first as they provide structure to your space which you can then plant around. Next plant perennials if you are using these. Perennials last for several years and (usually)

flower over summer and die back during winter. Avoid over-planting, plant in odd numbers (unless you seek a very formal look). Repeat plants and colours across your garden for a unified look. Plant annuals to fill in gaps and for seasonal colour. Remember, plants, like people, need food so visit us at Palmers for advice on how best to feed your garden



Martin and Debra from the Award winning Palmers Garden Centre in New Plymouth.

Deb & Cass welcome you to

BRANDY'S BOTANICAL BARN

INDOOR PLANTS, HOMEWARES, GIFTWARES & MORE

Open everyday during the Garden Festival
10am - 4pm

15 LIVINGSTON ROAD, HAWERA
Ph 027 278 5074
hello@brandysbotanicals.co.nz

Palmers

CAFÉ BOTANNIX

Entrance

PALMERS GARDEN CENTRE OF THE YEAR

THRIVING GARDEN CENTRE BUSINESS FOR SALE

Palmers NEW PLYMOUTH | **let's grow together**

Cnr Katere and Devon Roads Fitzroy
Ph: 06 758 7455

South Taranaki is known for its gardens

Celebrate the Centuria Taranaki Garden Festival or Taranaki Fringe Festival by exploring the public Parks on your back doorstep.

King Edward Park – High Street, Hawera

King Edward Park in Hawera is a nationally significant garden with deep roots in the past. The ancestry of the park (est 1902) is seen in its charmingly formal design. The lofty close clipped hedges give shelter to abundant azalea, rhododendron and rose collections. Adding to the history are aged trees, a century old model boating pond and a bronze statue of Wendy, which is the companion piece to the Peter Pan in London's Kensington Gardens.

The 150-year-old cannon has been a favourite toy for children, along with a pirate ship and fort. During the Centuria Taranaki Garden Festival or Taranaki Fringe Festival, seek out some of the hidden features along pathways, explore the statues and sculptures throughout or just enjoy a stroll through the Park while it's looking its best.

Be sure you cross High Street to have a look at the



Bridger Park – Eltham.

Victoria Cross Garden as well, honouring two local Victoria Cross recipients, John Gilroy Grant and Harry John Laurent.

Find out more about South Taranaki's Premiere Park, King Edward Park, online at www.southtaranaki.com/kep

Naumai Park – High Street, Hawera
Some call it the goblin park, others a native plant park. But situated at the southern end of Hawera's High Street, Naumai Park, which offers an overwhelming sense of being a "natural" native bush

environment, is lauded by most visitors as a gem.

The park is also a haven for wildlife. Aside from the ducks of all types that live on the lakes, the park is also home to Tui, Kereru (wood pigeon), Piwakawaka (fantail), Kotare (kingfisher), Tauhou (silver eye) and an occasional Kawau (pied shag). Tuna (eels) share the lake with an elusive, perhaps legendary, tortoise.

Goodson Dell – Corner of High Street and Cameron Street, Hawera

Situated on the corner of

High and Cameron Streets (Hawera), this park is only a step away from Naumai Park. Once part of an extensive private garden developed by a leading local horticulturist early last century, Goodson Dell is a tranquil, woodland setting offering a picturesque walk among native and exotic trees and plants. The Dell's trees, many of which are more than 100 years old, include magnificent specimens of Swamp Cypress (*Taxodium distichum*). A tiny natural stream, once dammed to

create a man-made lake is now bridged by a scale replica of an early 20th century Taranaki road bridge.

Council works in partnership with Friends of Hawera Parks. They also hold workshops and working bees for those who are interested. Keep up-to-date with what the Friends are up to by following their Facebook page – The Friends of Hawera Parks Inc.

Bridger Park – Eltham

Bridger Park provides a charming and restful centrepiece to Eltham's historic retail precinct. Bridger Park, named after Eltham Mayor from 1923 to 1938, Ira Bridger, straddles the Manawharawhara

Stream. Originally a wasteland of blackberry and tangled willows, it was transformed into an attractive park with predominantly native planting, the park is especially attractive when the kowhai are in bloom in early spring.

The children's Toy Wall is a bizarrely beautiful artwork began in 1997 when the late Fay Young found a child's toy car on the ground outside her home. She put the toy on a concrete wall for the child to find, but when the unclaimed toy kept falling off, she cemented it on. After that, other children asked her to add their toys to the wall and even after her death in 2000, the wall's collection has continued to grow.



King Edward Park – High Street, Hawera.

King Edward Park, Hawera

~ Scale Ship ~
REGATTA

Scale Ship Regatta Labour weekend

Model boats of all types and sizes will ply the King Edward Park waters at Labour weekend, 21 and 22 October, in Hawera's annual Scale Ship Regatta.

The regatta has been running since 1996 and the event continues to grow, with captains sailing their warships, tugboats and racing yachts and, as always, they will be keen to share the secrets of building and operating the model craft with spectators.

JAZZ
SOIREE

Jazz Soiree Sunday 29 October

Grab a ticket for a Jazz Soiree with The Starlights, an evening of jazz classics from the '40s to the '60s.

Bring your friends to enjoy the finest Taranaki jazz musicians and the beauty of King Edward Park with the help of The Friends of Hawera Parks Inc.

Tickets are \$30 (includes a picnic hamper), available from South Taranaki isite Visitor Centre at (06) 278 0555.

Arts **IN THE** PARK
KING EDWARD PARK | HAWERA

Arts in the Park Saturday 2 December

The District's largest outdoors arts and crafts festival, Arts in the Park, happens on the first Saturday of December each year.

Come along to one of our most popular events between 10am - 3pm to shop for Christmas, see local artisans and their handmade work, as well as take advantage of the food trucks, enjoy the roaming entertainment and keep the children busy at the Kidzone.

CONCERTS
IN THE
PARK

Concerts in the Park Saturday 20 January

With something for everyone Concerts in the Park is the ultimate family night out. Food trucks, bouncy castles and live music!

Popular New Zealand musicians take the stage to entertain, with past acts including The Waratahs, The Feelers, Mitch and his guitar, Frankie Stevens and many more.

We are proud to announce our headline act for Concerts in the Park 2024 will be kiwi Icon Tiki Taane.

Taranaki National Art Awards 2023



Above, below and at right: Scenes from the 2019 Taranaki National Art Awards. This year's Awards run from Saturday the 28th October to November 5 at Opunake.

The countdown is on for our 21st Art Awards and exhibition. Entries are closed and we have 366 artworks submitted across the seven categories. Delivery of all artworks to the Sinclair Electrical & Refrigeration Events Centre, Opunake, is from Monday 16 October – Sunday 22 October, 10am – 4pm daily. Any artworks received after 4pm on 22 October will not be accepted.

The TNAA Committee is in full organisational mode. The transformation of the gym into an exhibition space begins on Wednesday 18 October. Hanging and installation of artworks takes place on Tuesday 24 October from 9.30am – 4.30pm. We welcome community volunteers who would like to assist with this, for whatever length of time you have available. The TNAA provide lunch for all helpers on the day. Please let Megan know if you plan to come along for catering requirements.

Judging takes place on Thursday 26 October. Our two judges this year are

Professor Robert Jahnke, Professor of Maori Visual Arts, Massey University, and Taarati Taiaroa, Assistant Curator of Contemporary Maori Art, Govett Brewster Art Gallery. We are honoured to have such high calibre co-judges, bringing their expertise to our event and sharing their perspectives and insights with us.

The TNAA Opening and Awards Night is on Friday 27 October. All our valued sponsors are invited to attend from 6.30pm onwards. Doors open at 7pm and tickets will be available to purchase at the door for \$15 or prior from the Sinclair Events Centre office.

This year's theme is "Bring the Bling" so feel free to express in your dress. The Awards Ceremony will take place at 8pm and we encourage sponsor representatives to attend and present awards for the category they support. Liana Hart is providing musical entertainment throughout the evening and the Stratford Catering Co. will be serving up tasty platters to nibble on.

Come along and immerse yourself in the creativity, vibrancy and diversity of the Taranaki National Art Awards. It's a fabulous opportunity to hear the judges' comments about the award winners and meet many artists and appreciators from the Taranaki region and beyond. Opening night is a great opportunity to enjoy a first viewing of the numerous artworks, particularly if you are intending to make a purchase. The exhibition will run from Saturday 28 October – Sunday 5 November, 10am – 4pm daily, \$2 entry. The Stratford Catering Co. will be providing café offerings from 11am – 2pm daily for visitors to enjoy.

On the final Sunday 5 November, artworks can be collected from 5 – 7pm, and on Monday 6th November from 10am – 4pm. Please respect the committee's request to adhere to this schedule to ensure a robust collection process. These times are also when any artworks that have been purchased will be available to pick up.

Thank you so much to our amazing Opunake and Coastal community who continue to support this fantastic national event. Be proud of your participation and involvement and the time, talent and sponsorship you contribute to enable the 21st exhibition of the Taranaki National Art Awards to take place. We

Interesting exhibits for everyone.

thrive on the opportunity to showcase and advocate for the arts, culture and creativity in our community. We value the sharing of stories and expression of them through a diverse range of mediums. Unique perspectives enrich and enliven our community and interconnect the people who

share this place in space. Please check out the TNAA Facebook and Instagram, visit our website www.taranakiartawards.co.nz.

For any enquiries email contact@taranakiartawards.co.nz or call Megan Symons (0275007722) or Natasha and Candace @SEC (06 7617534)



PROUD TO SPONSOR
THE PEOPLE'S CHOICE AWARD
JANES GALLERY
 Where Picture Framing is an Art
 33 GOVER STREET,
 NEW PLYMOUTH PHONE 06 758 8746

Taranaki National Art Awards

AWARDS CEREMONY: 27 OCTOBER 2023
DOORS OPEN: 7PM TICKETS: \$15 PER PERSON
EXHIBITION: SAT 28 OCT - SUN 5 NOV 2023
10AM - 4PM 7 CATEGORIES \$2 ENTRY

SINCLAIR ELECTRICAL & REFRIGERATION EVENT CENTRE
TASMAN STREET, OPUNAKE, TARANAKI

www.taranakiartawards.co.nz

2022 WINNERS

A Very Special Season



Tanya Doty with some of her creations.

Our website for all updates:
<https://fromoutofthebluestudiogallery.com>

‘from out of the blue studio gallery’ is truly a part of the wonderful events that are happening in Taranaki this spring. For the first time ever the studio garden is open to the public as part of The Sustainable Backyards Trail, (#16, Viv’s garden) so everyone can come and see what is tucked in behind the majestic trees that fringe the property. The garden is very important to the studio gallery not just as it’s site but also as the place where many of the materials Viv Davy uses in her practice are grown. The garden is one acre and operates on an organic permaculture system. It is filled with dye plants and fibre plants for weaving and paper-making, but also houses ducks and chickens. Over the Garden Trail we will have an Artist In Residence in the accommodation facility in the garden. Tanya Doty of Hearthstone Baskets will be here from Upper Moutere, Nelson to run an extensive series of basket making

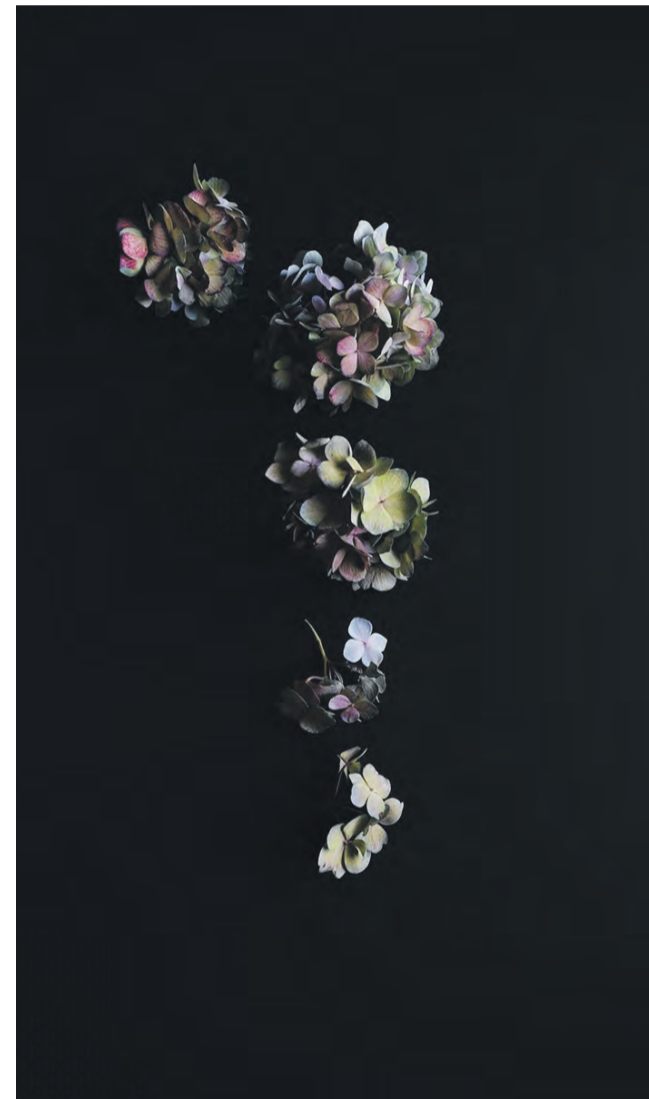
workshops. There are still limited spaces available on some of these classes.

The 10th Taranaki Arts Trail sees the studio gallery hosting the annual exhibition by Viv Davy called The Cupboard Collection 2023. Viv has been involved in nearly all of the 10 Arts Trails and it is always a wonderful time for meeting people and sharing art and art making practices. Pop-up demonstrations including dyeing with woad are planned for this year’s Trail and will be featured on social media.

And finally the studio

gallery is very excited to be a sponsor of The Taranaki Art Awards yet again, although this year we have extended the Fibre Art Award prize to include a three week residency at the space in Ōpunakē. It is believed that this will greatly increase the attractiveness of the award and will help to raise Ōpunakē’s profile in the world of Fibre Art. So it is going to be a wonderful season of rich experiences, welcoming new and old friends to our spaces to enjoy the beauty of our place, Taranaki.

Fay Looney



While promoting “Garden Art “Fay Looney is exhibiting in” Goodins Country Garden “ a range of Hydrangea images on a medium suitable for indoor and outdoor display all limited editions. Anyone who has travelled to her home studio over the years during the festival will have seen the very large images in her front paddock and on Koru on Koru Gallery wall still looking the same after 20 years while the medium is different the longevity is similar sun and fade proof. Fay only prints on this medium now thus solving the problem of large windows fading prints indoors check out her range on www.koruondevon.co.nz Seascapes - Landscapes – Flowers
 Light to hang on a simple rail.
 Fay’s work can be seen now in “Real Aotaroa Wellington gallery and Koru on Devon new Plymouth.

Open Sundays 22nd October,
 29th October & 5th November for
 festival shopping



80 Tasman St, Opunake | 06 761 8171
 Find us on Facebook



OPUNAKE BUSINESS ASSOCIATION MARKET DAY 2023

We are holding the annual Market Day on Saturday 28th October 2023 from 9am to 1 pm. This will be the same time as the Garden Festivals, Taranaki National Art Awards and the Taranaki Arts Trail. All of these draw visitors into our town.

It is a fantastic opportunity for your Club/School/Organisation to fundraise! It is also a great time to promote your Club/Organisation and invite new members.

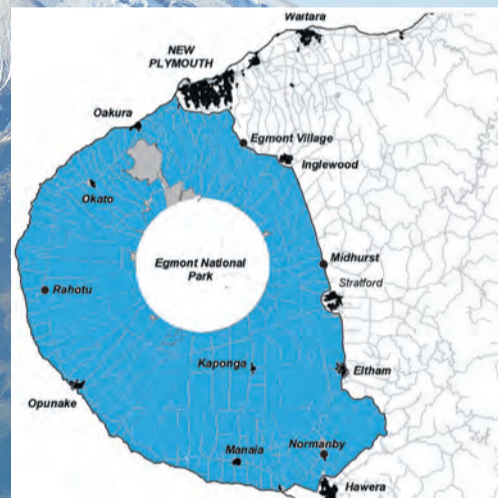
Town will be alive!
 Buskers are welcome!

Remember all food stalls need to be registered with the STDC. This can be done online or at the library. Stall fee is \$10.

Call in to Cecelia’s on Tasman to register, or txt 027 246 8604 to let ODBA know, or email rae.cornford@yahoo.co.nz that you will be participating.

Delivered free around the Mountain every fortnight.

Ph: 06 761 7016



LANDSCAPING & LAWN CARE

equipment hire



Turn your garden from drab to fab and your neighbours green with envy



A. 600 Devon St East, Fitzroy + 16a Manadon St, Spotswood W. tth.co.nz P. 757 8665

“Goodins Country Garden “
 Mirikau Rd. Surf Highway
 Taranaki Garden Festival Garden No. 15
 Supporting “Horses Helping Humans”
 Features exhibitions by John Crawford, Fay Looney (Hydrangea series) & Nicci Goodin - Designer Florist

Koru on Devon welcomes you to the opening preview of the exhibition at the City Gallery Wednesday 5pm 25th October. Koru on Devon is open throughout the festival 10am – 3pm or by appointment including evenings. Artists include: Teri Parat, Auckland Floral Artist – Odd Jobs – Koru Galleries Collective

“From above” Photo Credit: John Crawford Photographer



Koru on Devon Contemporary Art Gallery

www.koruondevon.co.nz
 13-15 Devon St. West (Opp. Huatoki Plaza)
 Ph.021410030
 Email koruondevon@gmail.com

Three garden gems



Enjoy our Regional Gardens over the Festival.

Taranaki Regional Council's three heritage properties, Tūpare, Pukeiti and Hollard Gardens will be the place to be during the Centuria Taranaki Garden Festival. While you explore, you will notice each garden offers a unique style, fascinating backstory and activities for everyone to enjoy. The gardens are open all day, every day and entry is free.

Pukeiti: 2290 Carrington Road, New Plymouth
Nestled just outside New Plymouth, Pukeiti

emerges as a horticultural paradise, beckoning all nature enthusiasts to its lush embrace. This botanical gem, sprawled over 360 acres, boasts a captivating tapestry of flora from around the world, painting the landscape with vibrant colours and fragrances. The range of native and exotic plants in bloom transforms Pukeiti into a sanctuary for relaxation and exploration. Stroll along meandering pathways or stop at The Rainforest Eatery for a coffee and a bite to eat. See the Pukeiti Facebook page or

head to www.pukeiti.co.nz

Hollard Gardens: 1686 Upper Mania Road, Kaponga
Hollard Gardens is an undiscovered treasure waiting to be explored. Tucked away near the rural town of Kaponga, it stands as a testament to Bernie Hollard's enduring love for nature. Opened in the 1920s and encompassing over four acres, this captivating garden takes visitors on an immersive journey through nature's wonders. Its eclectic assortment of rhododendrons, azaleas

and camellias weaves a stunning tapestry of colour year-round. Once you finish exploring, setup a picnic on one of the expansive lawns while the kids play on the playground in the family corner. See the Hollard Gardens Facebook page or head to www.hollardgardens.nz

Tūpare: 487 Mangorei Road, New Plymouth

Tūpare, a New Plymouth jewel, embodies nature's timeless beauty in every shape and form.

Spanning 8.5 acres, it is a serene retreat that catches the eye of locals and visitors alike. Its immaculate gardens, designed by Sir Russell Matthews, blend seamlessly with the rugged Taranaki landscape. From

the elegant Chapman-Taylor homestead to the captivating flora, and the tranquil sounds of the Waiwhakaiho River Tūpare is a true masterpiece of nature. Stroll beneath ancient trees, explore secluded pathways and immerse yourself in the enchanting world of Tūpare. See the Tūpare Facebook page or head to www.tupare.nz



Join us for the Garden Festival



TŪPARE

487 Mangorei Road, New Plymouth

Taranaki Symphony Orchestra and Ensembles

28-29 October, 10am to 4pm

Soak up beautiful music in our stunning surrounds.



Klei - An Exhibition in the Cottage

28-29 October, 10am to 4pm

Handmade ceramics by Maryanne Van Roij. Using porcelain and some terracotta clay Maryanne creates embellished functional and wearable pieces of art.

Guided Walking Tours

28 October to 5 November, 2pm

Etta - Coffee & Cake

30 October to 4 November, 8am to 2pm

Delicious coffee and fresh baked goods with Etta Coffee Caravan located in the Carpark.

HOLLARD GARDENS

1686 Upper Mania Road, Kaponga

Guided Walking Tours

27 October to 5 November, 2pm

Art Exhibition

27 October to 5 November, 10am to 3pm

Exhibition and live painting with established local artists Michelle Rowland and Susie Harrop.

Both artists paint animals, people and landscape. Art works on display use media such as pastels and oils

PUKEITI

2290 Carrington Road, New Plymouth

A Photographic Exhibition

27-29 October, 10am to 3pm

Enjoy works by local artist Robyn Morrison in the Rātā Room.

Guided Walking Tours

27 October to 5 November, 2pm

Mobility Vehicle Rides

27 October to 5 November, between 10am and 1pm



For more information:

www.trc.govt.nz/events

Free entry to gardens - open all day, every day

0800 736 222



Taranaki Garden & Arts Festival 2023 Dining and Accommodation Guide

Call in and see us on your garden travels around the mountain



Factory Retail Shop
38 South Road, Manaia



CHECK OUT OUR WEBSITE:
www.andersonspies.co.nz
OPENING HOURS
MON TO FRIDAY 6am - 4pm
PH 06 278 5553
sales@andersonspies.co.nz

144 Princes St
HAWERA

"best you can buy
an Andersons pie"



Visiting
New Plymouth?
Call in to The Good Home

Steaks, Pizzas, Salads, Fish
and Chips and more!
Delicious Desserts.
Great range of cold beers
and wines.

We have all your bases covered.
Open for Brunch, Lunch & Dinner

Proud supporters of the
Coast!

21 Ariki st | www.thegoodhomenp.co.nz | 06 7584740



Experience dining at
The Mountain House
during the
Garden Festival in
'TARANAKI'S
LARGEST GARDEN'

OPEN FROM 9am WEDNESDAY TO 9pm SUNDAY

Ngati Ruanui

STRATFORD MOUNTAIN HOUSE
998 Pembroke Rd, Taranaki
Ph 06 765 6100

mountainhouse@ruanui.co.nz | www.stratfordmountainhouse.co.nz

Rainforest
Eatery
FRESH + LOCAL + DELICIOUS

we're
OPEN
9.30am to 4pm

October to February
Open every day except Christmas Day

at Pukeiti - 2290 Carrington Rd - New Plymouth

Taranaki Garden & Arts Festival 2023 Dining and Accommodation Guide



28 TASMAN STREET, OPUNAKE
PH. 06 761 8387



*New Owners
Charlie &
Maggie*

Open 7 Days: 11am-close



**BLACK BULL
BOTTLE STORE**
Best prices
guaranteed

f OPUNAKE SURF INN



KAPONGA HOTEL
Cafe, bar, restaurant, bottle store,
accommodation and conference room.
Quiz nights last Tuesday of every month.
Bingo - first Wednesday of every month
HANDLE CLUB AND RAFFLE EVERY FRIDAY NIGHT

Open Tuesday to Sunday 11am to late
BOOKINGS ESSENTIAL
49 Egmont St, Kaponga
06 764 6770
Follow our Kaponga Hotel facebook page for daily promotions and updates.

I look
this good
because
I'm Vegan



**OPENING
HOURS**

Thursday
& Friday
9am - 2.30pm

Saturday
& Sunday
9am - 4pm

**LEMONWOOD
Eatery**
Vegan / Vegetarian / Awesome

Main road OKATO - at the roundabout

The Vault in Opunake is a high end cocktail bar and gourmet pizza restaurant. Offering a bourgeois space for you to go and enjoy some amazing share plates, pizza, and seafood. Boasting a range of beverages from cocktails to craft beer to fine wine, it is the spot to be this summer!

Some Menu options include:

- Steamed pork or lamb bao buns • Fish bites with chips • Chicken bites • Chicken, Camembert and Cranberry Pizza • Steak platter • Creamy Garlic Mussels

Beverages include:
Espresso martini • Rose Bud • Teremana Daisy • Shining peak craft beer • Man o War and Amisfield wines

Opening Hours:
Thursday - Saturday: 5pm to 9pm
Saturday - Monday: 12pm to 2pm



55 TASMAN ST, OPUNAKE | 06 262 4024

“Aroha Manaia!!”
OPEN 7 DAYS 11am - close
Great meals with generous portions | Black Bull Bottle Store




“Your local pub” - Owners Charlie and Maggie

WAIMATE HOTEL
49 South Rd, Manaia | Ph 06 274 8341 or 020 4086 6084
Facebook: Waimate Hotel - Manaia
email: newwaimatehotel@outlook.com

90 Tasman St, Opunake - Ph: 06 761 8550

Arty Tarts

Genuine Home Cooked Food, Pies,
Savouries, Fresh Scones, Muffins,
Cakes, Slices and Sandwiches.
All Day Breakfast
Open 5.30am - 3pm
Open 7 Days a week



Enjoy the water but stay safe this summer



Port Taranaki. Stay safe this summer.

Boaties are being reminded of the importance of carrying lifejackets for everyone enjoying a trip out to sea to keep all water users safe and sound this summer.

Port Taranaki Harbour Master Tony Parr says it's always great to see recreational boats exploring the fantastic Taranaki coastline but it's vital everyone on board and particularly the skipper makes sure they are prepared before they set off.

"The region has a special coastline which is enjoyed by so many people each summer and the last thing we want to see is a tragedy that could have been avoided," says Mr Parr.

"Everyone going on a boat trip needs to plan ahead, especially the skipper. He or she must ensure there are enough lifejackets for every single person on the boat. Just as important as having them on board is making sure they fit as well.

"It's the skipper's call if people have to wear them but my advice is it's best to be safe than sorry so it's a great idea to always put on a lifejacket before you set off."

Recreational boats which must have properly fitted lifejackets or personal floatation devices on board

include yachts, sailing dinghies, power boats, jet skis, kayaks, canoes, paddle boards and waka ama.

"It's important to remember this isn't just for boaties using the harbour at Port Taranaki. We want everyone on the water across Taranaki to please keep safe including

those exploring estuaries and inland waterways."

As well as having a lifejacket on board, Mr Parr also recommends:

- Having at least two forms of communication with you including a mobile phone (protected from water), an EPIRB/PLB

(radio beacons), a VHF radio or flares;

- Telling someone where you are leaving from and where you are going, how many on board and what your expected time of return is. You can do this via a 'Trip Report' to the Coastguard on VHF radio

channel 61;

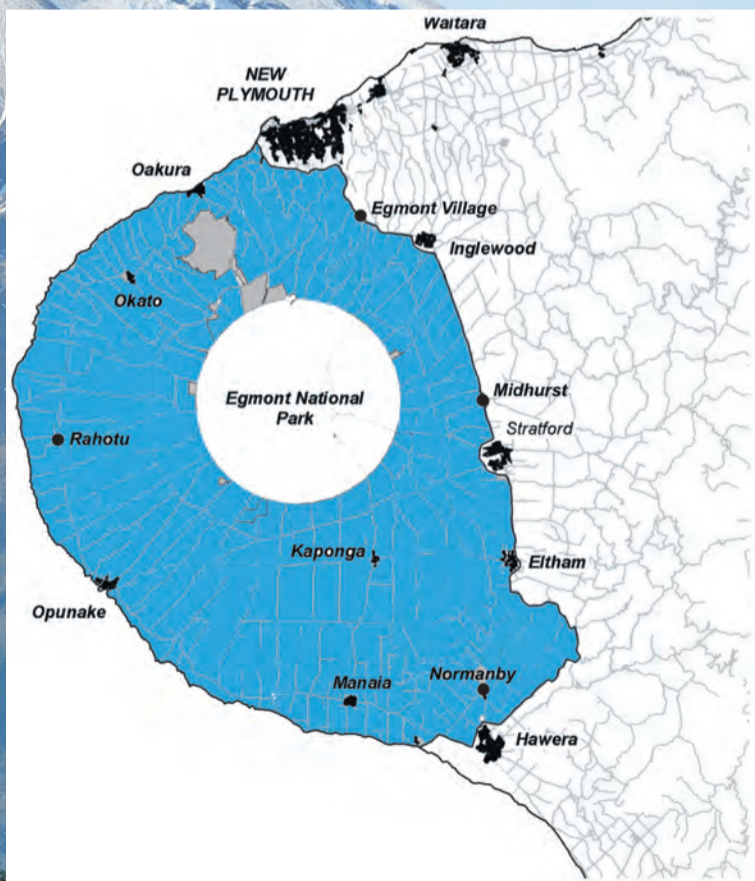
- Checking the weather forecast;
- Avoiding alcohol;
- Keeping clear of any large ships under way in the port and harbour area (300 metres clear ahead, 50 metres either side and astern of a large vessel);

• Being mindful of the five knot speed limit within 200 metres of the shore, including the Lee Breakwater;

• Swimmers remaining in the recreational area of Ngāmotu Beach and avoiding the main channel and ship turning basin.

Delivered free around the Mountain every fortnight.

Ph: 06 761 7016



OPUNAKE & COASTAL NEWS

OPUNAKE & COASTAL NEWS



Our Christmas Edition and Holiday Guide will be out on the 14th of December.



The deadline if you would like to wish your customers and clients a Merry Christmas or feature your business in the Holiday Guide is November 28. Get in touch with us now!

Email: ads@opunakecoastalnews.co.nz

Ph: 06 761 7016

A busy season at MG Taranaki Stratford Speedway

Speedway racing is about to kick off for the new season at MG Taranaki Stratford Speedway and with six national titles to be hosted at the local track, along with all the usual events, organisers will be kept busy and the spectators will have plenty of entertainment options.

The new season begins with the R&R Mechanical opening night on October 28 and after the winter layoff, the drivers will no doubt be keen to get back on the track, test the rebuilt or new cars and see who can win the first races or events. Just one week later on November 4, the Fireworks Spectacular will provide action both on and off the track and then ensues another seventeen race nights with the season culmination with the final event on April 13.

As previously mentioned, there will be six National Titles run at Stratford this season, bringing drivers, crews and spectators into the Taranaki region and more specifically to Stratford. The first national event scheduled is the North Island Saloon Championship on December 9.

The Sentry Hill Motel New Zealand Stockcar Championship will run on Friday 12 and Saturday 13 January and will bring



Stratford Speedway Saloons.

together the ultimate field of Stockcars. Taranaki, Stratford and the Speedway will all be pumping as up to two hundred competitors will converge here to decide who the new New Zealand Champion will be. Just two weeks later the New Zealand Streetstock Grand Prix will be held on Friday January 26 and Saturday January 27, the second night being matched with the West Coast Stockcar Teams Champs and the 26 and Under Superstock Champs to make the ultimate speedway meeting for fans of contact racing.

February 17 sees the running of the New Zealand Minisprint Championship which will delight open wheel race fans while the New Zealand Modified Championship on Friday

March 8 and Saturday March 9 will showcase the high horse-powered, big winged cars that absolutely fly around the Stratford Oval.

The last national title to run is the New Zealand Saloon Grand Prix on March 23.

To see the full calendar and information on upcoming events at MG Taranaki Stratford Speedway, check out the Facebook pages and groups or visit www.stratford-speedway.co.nz.

Why don't you consider a season or junior member pass?

Do you attend speedway often? Have you ever considered a season or junior member pass? Both of these provide an economical way to attend speedway locally and can offer some good savings.

gate prices range from \$20 to \$30, this offers excellent value for money and is a way that the Taranaki Stock Car Club can look after their loyal patrons.

The junior members club is ridiculously cheap, being just \$30 for children between the ages of 5 and 14 yrs. Not only does this give the child entry to each race event but also puts them into nightly draws for prizes.

You can find links to purchase season passes at www.stratford-speedway.co.nz

Save time in the queue - purchase your tickets online.

Last season for the first time, Online tickets sales were introduced for MG

Taranaki Stratford Speedway. There was a lot of learning for everyone involved and plenty of feedback as well. The good news is that the Taranaki Stock Car Club have listened. The biggest gripe was the fees on top of the ticket prices, these have been reduced for the customer and are now very fair for all tickets. So now, you can still beat the queues by using the online ticket lane and you can also do it for minimal additional outlay.

Purchase your tickets online this season to save waiting in line, the hassles of paying at the gate and to ensure a smooth transition into the venue.

An adult season pass costs \$300 which sounds a lot but if you divide this by the number of race meetings, it averages at just under \$16 per admission. Considering



Stratford Speedway Modified.



Stratford Speedway Stockcars.



Under the Mountain Arts & Crafts Fête

10am-3pm, Sat 21 October

TARANAKI DIOCESAN SCHOOL, STRATFORD
Entry via Pembroke Road

Gold coin donation entry - 120 sites of quality arts and crafts and food

NEXT EVENT

SATURDAY OCTOBER 28TH

OPENING NIGHT Superstock, Saloon, Minisprint & Streetstock City of New Plymouth Classics.

Sponsored By:



Plus:

Stockcars and Youth Ministocks



Gates Open - 4:30pm Racing Starts - 6:30pm

Adult \$20, Child \$8 (14 & Under)

Family \$45 (2 Adults & up to 4 Children)

Student/Pensioner \$15 (Must Present ID)

Under 5's Free

Please visit our website or find us on Facebook to find more information on each race meeting, what's coming up each week and to see online ticketing options.

www.stratford-speedway.co.nz



Proudly sponsored by **MG TARANAKI**



Opunake Players Present...

So if there's ever a time for a hearty belly laugh, then we imagine now would help lift the spirits. All is not lost as Opunake Players have come up with a plan to have everyone rocking in their seats.

Wendy Smith is directing a play of hilarious proportions and gives a nod to David McPhail and Jon Gadsby, a duo known during the 80s for their political satire versions, and this one "Try this for Size OR Moustaches, Muffs and Minstrels" will not disappoint.

The talented cast, some new to our stage include Alistair Cook as Sir Jasper Dreadful, a positively horrible bloke.

Michelle Julian as Mum, an unworldly and very ditsy woman.

Alexandra Macbeth a Charlotte, the young and naïve daughter.

Ben Wood as Roger the Minstrel, a tone-deaf busker.

Elaine Spencer plays the young Mum of days gone by

Ethan Smith is the young Jasper Dreadful, and portrays the same egotistical, horrible bloke, but with hysterical outcomes.



The Cast for Moustaches, Muffs and Minstrels.

Diane Baldie teams up with Elaine Spencer in a Real Estate deal too good to miss

...and Christine Ryan plays the horrified land valuation person.

These cast characters will lead you into a riot of antics, anecdotes and side-splitting innuendos.

The bunch of amazing singers who help the cast and audience romp through

the evening is led by our musical maestro Chloe Danz who has Melanie Brown, Sam Allison, Christine Ryan, Ethan Smith and Lynelle and Melissa Kuriger as her cohorts.

Christine Ryan, also our choreographer has come up with some great moves.

The 'Once Upon a Time' voice over is Heather Jensen who fills in the story line and prompts in her spare time.

Will there be audience participation?

We certainly hope so. Come along and be entertained.

Grab your tickets from

Sinclair Electrical.

Show dates. November 9, 10, 11, 12 and then 15, 16, 17, 18.

Early bird tickets \$25 only for November 9 and 10. All other evening show dates \$30.

OPUNAKE OUTDOORS & SERVICE

SHOW US YOUR FISH
Bring in your latest catch. We will pop your photo on our FB Page and you will go in the draw to win prizes in-store

Nov 12 1pm: Ladies afternoon with a twist
Learn to service your own small machines!

Chainsaw sharpening | Lawnmower servicing
Fishing gear | 20% off all Black Magic products

All services in October go in a draw for an electric edger

Ph 021 306 668

Temporary change to SH3/Junction St access likely to accelerate safety programme

Waka Kotahi expects temporary changes to the access onto Junction Street from State Highway 3 will accelerate the SH3 New Plymouth to Hāwera Safety Improvements Project.

As the project continues, access to and from SH3 from Junction Street will be closed

between 24 October and late December. The closure will enable contractors to work at the site without moving traffic, potentially shaving an estimated two to three weeks from the project's timeline.

The Junction Street works include installation

of an intersection speed zone and flexible median barriers immediately north of Junction St, and between Junction St and Mangorei Road, New Plymouth.

The intersection speed zone will increase safety for all road users by detecting when traffic is approaching the highway from Junction St or turning right into Junction St from the highway, and temporarily reducing the local SH3 speed limit to 60kmh.

The 420-metre southbound passing lane at Junction Street, which is much

shorter than the minimum safe overtaking length of 600m-800m, will also be removed as part of these works.

In addition, Waka Kotahi is planning the installation of six kilometres of flexible median barriers at five sites between Inglewood and Hāwera, to begin in early 2024.

Once contractors have finished these works at Junction Street, they will move onto the next stage of the project at the intersection with Mangorei Road, which will involve a roundabout.

Record Fair at Everybody's Theatre, Opunake

Friday 1st Dec,
2pm to 5.30pm
Free Entry, New Vendors Always Welcome

Ph 0800rekords
or txt 022 633 0405
recordfairsnz@gmail.com

Opunake Players Inc Present

Try This for Size
or

Moustaches, Muffs & Minstrels

Written by David McPhail and Jon Gadsby

Directed by Wendy Smith

November 9th -18th
Tickets \$30

Available at Sinclair Electrical & Refrigeration Ph 06 761 8084

Karams Clothes on the Coast

MARKET DAY
October 28

GREAT BARGAINS IN ALL RANGES -
Mens, Womens, Boys, Girls & Babies

Check it out!

www.karamsclothes.nz | karams.clothes@xtra.co.nz

Karams 'CLOTHES ON THE COAST'

35 Tasman St
Surf Highway 45
OPUNAKE
Ph 06 761 8139

CHURCH SERVICES



Church Services - Manaia, Kaponga, Opunake, Pungarehu, Okata, Oakura

Opunake Co-operating Parish

Havelock Street, Opunake - St Pauls - 9.30am every Sunday
Rahotu - Wesley - 11am first Sunday of the month

Okato Co-operating Parish

Okato - St. Paul's - Sunday Service every 1st and 3rd Sundays of each month, 10.00am
Oakura - St. James - Sunday Service every 2nd and 4th Sundays of each month, 10.00am
Mid-week open church - Okato - St. Paul's - Pew for You, every 3rd Wednesday of each month, 4.30pm-6.00pm

Opunake Catholic Church

St Martins, Pungarehu: 8.30am every 2nd and 4th Sundays of the month

Our Lady Star of the Sea, Opunake: 10am every Sunday

Other areas
Manaia - Sacred Heart - 1st, 3rd Sat at 5pm (2nd, 4th & 5th Sat at Hawera's St Josephs)

St Patricks Catholic Church, Kaponga

2nd, 4th and 5th Saturdays of the month Mass at 6pm. However during winter the time will be 5pm i.e. Saturday 10th June, 24th June and 8th July. After this date the time will revert back to 6pm.

1st and 3rd Sundays of the month Liturgy of the Word with Communion at 8.45am.

Thursday Mass 9.30am (subject to change).

St Patricks Catholic Church, Okato

Saturday Vigil 6.00pm - 1st, 3rd & 5th Saturdays

The Wave

Pentecostal Church 64 Domett St, Opunake

Sunday Services 10.30am

Women's Group 10am Tuesday

Men's Group 7pm Wednesday

Come along or contact

Belinda Philp

027 935 6191

St. Barnabas Anglican Church

141 Tasman St, Opunake

Sunday Services 10am

Communion 2nd, 3rd & 4th Sunday

Prayer & Praise 1st Sunday

Every 5th Sunday all 4 churches gather for a Combined Service

Okato Community Church

Meets 10.30am Sunday at Hempton Hall.

Everyone welcome

St John's Community Church, Kaponga

Cnr West and Egmont Streets.

Sunday Services 10.30am followed by morning tea

Manaia Union Fellowship

Terou St, Manaia.

Meet 10am every 3rd Sunday of the month with communion

Ronald Hugh Morrieson Literary Awards 2023 finalists announced

The wait is over. Finalists for the Lysaght-Watt Trust Ronald Hugh Morrieson Literary Awards have been announced.

181 entries have kept this year's judges busy since the competition closed in August.

There are five categories in the Awards: Poetry (Open and Secondary School), Short Story (Open and Secondary School) and the True Story - Research Article (Secondary School only).

Poetry judge Mikaela Nyman commented on the number of the entries she received for this year's competition.

"With 119 of [the entries] being poems, and the poetry workshops fully subscribed, it is fair to say that poetry is alive and well in Taranaki," she says.

Research article judge Matt Rilko commented on this year's entries being well above any other year.

"Entries in the 2023 True Story section were uniformly assured, imaginative and expertly structured. Great entries this year. Technically well above any other year."

Short Story judge Emma Hislop says entries this year were highly entertaining.

"The stories in both categories were highly entertaining and covered a range of topics," she said.

Everyone is invited to attend the Awards Ceremony at the TSB Hub, Hāwera on Thursday 26 October, where the judges will comment on their respective categories and highlight the works that won them over.

Finalists (all categories). Aria Brophy, Bethany Gyde,



(1963), *Came a Hot Friday* (1964), *Predicament* (published in 1975) and his only contemporary novel *Pallet on the Floor* (1976). All have been adapted for the cinema, the only New Zealand writer to have acquired this achievement. Two short stories were published posthumously, in 1974; *Cross My Heart and Cut My Throat* and *The Chimney*.

Left: Ronald Hugh Morrieson. Painting by Bernice McKellar.

The Christmas issue of Opunake & Coastal News is due out on the 14th of December. The deadline for contributions is November 28. Get them in early!

Bruce Finer, Catherine Hurley, Christine Cameron, Dave Lee, Ella Butterworth, For my Wairua, Graeme Woller, James O'Sullivan, Lauren Kalin, Maakare Edwards, Maria Taylor, Oliver Marsh, Pip Harrison, Shaneya Patel, Stacey Lodge, Willow Noir, Zoe Kruse

The Awards, sponsored by the Lysaght Watt Trust, honour the work of one of New Zealand's most preeminent authors, Ronald Hugh Morrieson (1922 - 1972). Morrieson wrote four novels: a coming-of-age tale *The Scarecrow*

Taranaki Jazz Club presents THE GREAT TARANAKI STEAM BAND



4.30pm Sunday November 5
Doors open at 3.45 pm. EFTPOS/Cash entry.
NEW PLYMOUTH CLUB, GILL STREET

EVERYBODY'S THEATRE OPUNAKE

72 Tasman Street, Opunake | www.everybodystheatre.co.nz

Scrapper 1hr 24mins M Fri 20 Oct 7PM Sat 28 Oct 7PM	PAW Patrol: The Mighty Movie 1hr 28mins G Sat 21 Oct 1PM Sat 28 Oct 1PM
The Creator 2hr 13mins M Sat 21 Oct 7PM Sun 22 Oct 1PM Thu 26 Oct 7PM	Stylebender 1hr 42mins M Sun 22 Oct 7PM
Ruby Gillman, Teenage Kraken 1hr 31mins PG Mon 23 Oct 1PM	Uproar 1hr 50mins M Mon 23 Oct 7PM
EXPEND4BLES 1hr 43mins R16 Fri 27 Oct 7PM Thu 02 Nov 7PM	The Exorcist: Believer 1hr 51mins R16 Sun 29 Oct 1PM
Five Nights at Freddy's 30mins TBC Sun 29 Oct 7PM Fri 03 Nov 7PM	

Scrapper
Violence | 1hr 24mins | Rated: M
Fri 20 Oct 7PM

PAW Patrol: The Mighty Movie
1hr 28mins | Rated: G
Sat 21 Oct 1PM

Some of the regular services:

TAYLOR DENTAL PRACTICE

Every Thursday and 2nd Friday

LISA KEEN AUDIOLOGY

Every Wednesday

ACTIVE + PHYSIOTHERAPY

Monday & Thursday 9am to 3.30pm

NZ POST

Monday to Friday, 8.30am to 5pm

COASTAL PRINTERS

Monday to Friday, 8.30am to 5pm

TARANAKI CHIROPRACTIC

Every Wednesday

COUNSELLORS

Gwenyth Richards 06 278 6399

Leonie Landsheer 027 559 0982

Alex Jones 021 0816 3248

Manuka Matthews 027 239 5896

Steph Vaitupu 021 090 79597

MATTHEWS OPTOMETRISTS

Twice monthly on a Thursday

TARANAKI PODIATRY

Every 2nd Wednesday of the month

BUDGET ADVICE

Wednesday fortnightly

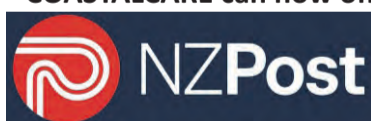
HIP

Every Tuesday

DID YOU KNOW?

CoastalCare offers for hire private, well-appointed room's for meetings, training opportunities and social gatherings.

COASTALCARE can now offer these services!



International & Domestic Post

Christmas sending dates:

	Economy	Courier	Express
NZ	Mon 18 Dec	Wed 20 Dec	
AUSTRALIA	Wed 29 Nov	Mon 11 Dec	Mon 18 Dec
South Pacific	Fri 24 Nov	Fri 8 Dec	Fri 15 Dec
North America			
Asia, UK, Europe			
Rest of the World	Mon 20 Nov	Wed 29 Nov	Wed 13 Dec



Our Vehicle Licensing Service includes car regos, change of ownership, RUC, number plates and more.

We also have a great range of stationery, ink, calendars, Christmas wrapping/cards and more.

OPEN MONDAY to FRIDAY 8.30am to 5.00pm
26 Napier Street, OPUNAKE

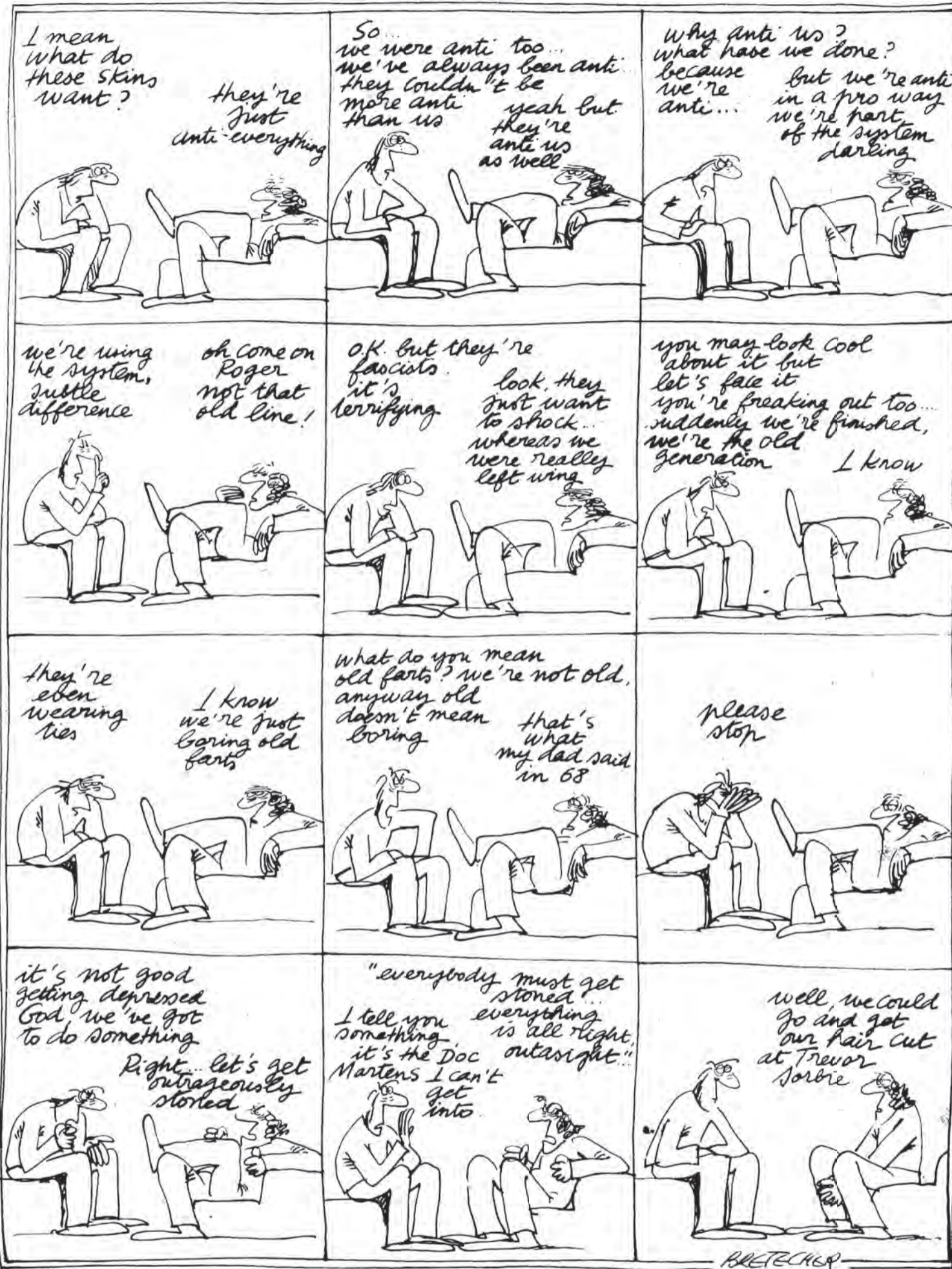


Find us on Facebook
or visit us at www.coastalcare.co.nz
CONTACT ARETHA LEMON
Facility Manager on 06 761 8488



What's On Listings

HAS BEEN



ONGOING

Movies at Everybodys Theatre in Opunake: Playing several days and nights each week. Refer timetable in newspaper.

MONDAYS: The Barnabas Centre - St Barnabas Church Hall, 141 Tasman Street Opunake: Each Monday 10 am - 12:30 pm. Information call Jenny 7618080 or Glenys 6558025

TUESDAYS

Opunake Walking Group: Every Tuesday 10am. Meet outside Club Hotel on Havelock St. Phone Margaret 027 477 5600 for more info if needed, or just turn up.

WEDNESDAYS

Lisa Keen Audiology at Coastal Care, Opunake: Wednesdays 9am - 5pm, for an appointment call 027 591 4222 - 0800 555 676

Okato & District Historical Society open every Wednesday: At the Okato Community Trust Hall, 47 Cumming St, Okato. phone Meg on 06 752 4566.

Opunake Embroiders Guild: Meet 2nd and 4th Wednesdays of the month, 10.30am-3pm at the Opunake Business Centre, Napier St, Opunake. Just come along or phone Sheryl 06 761 8769.

Okato Market: In Hempton Hall, Okato 4pm to 5.30pm.

Free singing experience with Taranaki Harmony Chorus: Meet every Wednesday at Inglewood Mamaku Centre, 7-9.30 pm Phone Helen 021 296 0700.

THURSDAYS

Coastal Young Farmers: Meet 2nd Thursday of every month at 7pm at Butlers Reef Bar & Cafe, Oakura.

Egmont Euchre Club: Every Thursday 1pm at the Opunake Bowling Club. Inquiries, 06 761 8277 or 06 761 8337

Taranaki Country Music Hall of Fame, Manaia: Running every Thursday night from 7.30pm, 11 Surf Highway, South Road, Manaia.

FRIDAYS

Eltham Business Association Friday Markets: 9:30am to 1pm, Carpark of Touch Point, High Street, Eltham.

Singer Songwriters, New Plymouth: Last Friday of the month at Little Theatre, 29 Aubrey St, NP from 7-11pm.

AT THE CLUB HOTEL THIS WEEK:

Monday: Pizza - 2 for \$20; **Tuesday:** Order online for 30% off; **Wednesday:** Pizza night- 2 for \$20;

Thursday: Pensioners Lunch, \$15, Steak Night for \$20; **Friday:** Pensioners Lunch, \$15, Fish & Chips \$20. **Saturday:** Chicken Schnitzel \$20.

Sunday: Roast Night with complimentary dessert for dine-in customers.

Call us on 06 761 7016

TO SEE HOW THE

OPUNAKE & COASTAL NEWS

CAN HELP YOUR ADVERTISING REACH YOUR TARGET AUDIENCE

FOR ADVERTISING THAT WORKS

OPUNAKE & COASTAL NEWS



APRIL 7 TO NOVEMBER 6

State of Nature exhibition: PukeAriki Museum, New Plymouth

OCTOBER 27 TO NOVEMBER 5

Taranaki Garden Festival: Around Taranaki

Taranaki National Art Awards: At Sinclair Electrical & Refrigeration Event Centre, Opunake.

OCTOBER 28

Opunake Market Day: From 9am-1pm

Stratford Speedway Opening Night: At MG Taranaki Stratford Speedway. Gates open at 4.30pm. Racing starts at 6.30pm.

NOVEMBER 5

The Great Taranaki Steam Band: Presented by Taranaki Jazz Club. At the New Plymouth Club. 4.30pm.

NOVEMBER 9 TO 18

"Try this for Size OR Moustaches, Muffs and Minstrels": A production by Opunake Players. At the Lakeside Playhouse.

DECEMBER 1

Record Fair: At Everybodys Theatre, Opunake. 2pm-5.30pm.

PUBLIC NOTICES

TRADES & SERVICES

DEATH NOTICE



Ngaruahine Iwi Health Service

is proud to announce that its GP clinic 'Te Whare Hauora o Ngaruahine' is now accepting enrolments and will open its doors shortly.

Enrolment forms can be collected at the clinic site **16 Tauranga-A-Ika Street – Manaia – Ph: 06 243 4010** or requested by e-mail at gpclinic@ngaruahine.org

All enrolments will be accepted and sorted by order of priority, based on health and social needs. First appointments will be offered to enrolled patients during the 2nd half of October.

Public Notice

Toroanui Marae Komiti Parihaka Trust held our AGM on Sunday 08 October. Following are the results of the elections:

Toroanui Marae PPT reps:

- Christine Phillips-Ryburn
- Moana Tuteuruoho Phillips

Toroanui Marae Komiti Parihaka Trust trustees:

- Whakaarahia Tai Rawhiti Kukutai
- Natalie Cameron (Treasurer)
- Mina Mathieson (Interim secretary, financial support)
- David Mahutonga
- Damon Ritai (Chairperson)

*Ngā mihi
Damon Ritai, Chairperson*

HCL BUILDERS for all kitchens. Ph 027 236 7129.

HCL BUILDERS for building decks. Ph 027 236 7129.

LAWNMOWING, and section maintenance by local contractor SOS. Free quote. Ph 027 605 8437.

HAWERA BUDGET Advisory Service. Wed 9am to 12pm. Coastal Care, Opunake by appointment. Starting Feb 8th 2023 and fortnightly thereafter. Contact us by phone: 0800 333 048 (free from mobile). Facebook page: Hawera Budget Advisory Service. Email: info@hawerabudget.co.nz

CARPETS second hand, large selection After Disaster Ltd 223 Devon St West, NP. Phone (06) 769 9265

SCRAP METAL - for all scrap metal Taranaki wide, give us a call. Molten Metals (06) 751 5367. www.moltenmetals.co.nz

van der SAR, Eelkje (nee Postma)
Passed away peacefully at Taranaki Base Hospital on Wednesday 4 October 2023. Aged 90 years. Life-long beloved wife of Jack. Treasured mother and mother-in-law of John (deceased), Irene and Steve, Cornelis (deceased), Ian and Lorraine, Susan and Ross Johnson, Mark and Joy, Jocelyn and Brian Tilbrook and Dan. Much loved Oma of Jana-Liese and Jozien; Tara, Samuel and Bethany; Nicole and Cameron; Hannah and Aria; Kaitlin and Rebecca and their partners. Special great-grandmother of Charlie, Thea and Thomas. A celebration of Eelkje's life was held at St Paul's Co-operating Church, Opunake on Tuesday 17 October 2023 after which she was laid to rest in the Opunake Cemetery.



J.E. PRESTIDGE TRUST

The J.E. Prestidge Trust has bursaries available to those people who may be undertaking tertiary studies in Agriculture or Horticulture or in allied courses. To qualify, applicants must have attended at some stage during their secondary schooling a High School in Taranaki.

Application forms and full details of the bursaries are available from:

Kellie Parker
Till Henderson
STRATFORD
Ph. 06 765 7123

Email: kellie.parker@thlaw.co.nz

Applications close on Friday 1 December 2023 4pm

TRADES & SERVICES

Public notice of application for OFF Licence Section 101, Sale and Supply of Alcohol Act 2012

KUMAR VENTURES LIMITED, 14 Corsham Grove, Churton Park, Wellington, 6037, NZ has made application to the South Taranaki District Licensing Committee for the issue of an OFF licence in respect of the premises situated at 5794 South Road, RD 34/Rahotu, Opunake, 4684, known as Rahotu Super Mart.

The general nature of the business conducted (or to be conducted) under the licence is **Grocery store**.

The days on which and the hours during which alcohol is (or is intended to be) sold under the licence are:
Mon-Sunday- 6am-8pm.

The application may be inspected during ordinary office hours at the office of the South Taranaki District Licensing Committee at 105/109 Albion Street, Hāwera, 4610.

Any person who is entitled to object and who wishes to object to the issue of the licence may, not later than 25 working days after the date of the first publication of this notice, file a notice in writing of the objection with the Secretary of the South Taranaki District Licensing Committee at:

The Secretary, South Taranaki District Licensing Committee, Private Bag 902, Hāwera, 4640.

No objection to the issue of a licence may be made in relation to a matter other than a matter specified in section 105(1) of the Sale and Supply of Alcohol Act 2012.

This is the first publication of this notice.
This notice was first published on: 19/10/2023



06 757 4483
taranakisales@milestonehomes.co.nz
milestonehomes.co.nz

WANTED TO BUY

Stevenson Calf Rearing

MILK & COLOSTRUM WANTED

Picking up 24/7

Our tanker handles large volumes

Ph. Mark or Trish on 0800 350 340 or txt

027 495 2897 E: markstevo@xtra.co.nz

Troy Stevenson 027 469 7636

E: troystevo@gmail.com

TO LET



Office Rooms/ Board Room available

Long term, short term or casual basis
Building has kitchen facilities, wheelchair access, cleaning services and plenty of parking on Napier Street or at rear of building on King Street.

Inquiries to Clare Moss - Ph 06 278 4169
clare.moss@hughson.co.nz

BOATS FOR SALE

CARIBOU 17 Trailer Sailer. To view call 021 113 1329, Labour Weekend. Whangamata.

GRAZING

GRAZING AVAILABLE for Weiner Dairy Heifers. Phone Richard 027 510 9667.



This newspaper is subject to NZ Press Council procedures. A complaint must first be directed in writing, within one month of publication, to the [editor's/website author's] email address. If not satisfied with the response, the complaint may be referred to the Press Council P O Box 10-879, The Terrace, Wellington 6143. Or use the online complaint form at www.presscouncil.org.nz Please include copies of the article and all correspondence with the publication.



meritcars

with distinction

VISIT WEBSITE MERITCARS.CO.NZ

493 DEVON STREET EAST, STRANDON, NEW PLYMOUTH
CALL US TODAY 06 281 1925

ALL ON ROAD COSTS INCLUDED PLUS TANK OF FUEL. ONE STOP SHOP FOR FINANCE, WARRANTIES & FREE SMILES

**2012 Volkswagen GOLF TSI
HANDY HATCH**
2WD, Tow Bar, Auto Headlights, Stability Control,
Turbo, 1380cc, Petrol, Auto, 91kms



\$12,995

**2017 Ford Focus TREND
SPORTY NZ NEW HATCH**
2WD, Cruise Control, ECOBOOST, Reversing Camera,
Auto Headlights, Stability Control, Turbo, 1498cc,
Petrol, 6 Spd Auto, 133kms



ONLY \$15,995

**2021 Nissan JUKE ST-L
NZ NEW, NEW SHAPE,**
2WD, Lane Departure, i-STOP, Turbo, 5 Door,
999cc, Petrol, Auto, 12kms



\$28,995

2014 Holden Captiva LT
Great Value Low Km's SUV, 2WD, Auto Headlights,
Roof Rails, Cruise Control, 2384cc, Petrol, 6 Speed
Auto, 96kms



\$14,995

2023 MG 3 EXCITE 1.5P
AS NEW, 3000km with balance of 7yr
warranty included. Auto, highly spec'd
hatch.



ONLY \$20,495

**THIS WEEK'S SPECIAL:
2018 Mazda Cx-5 GSX**
i-STOP, Keyless Start, 1998cc, Petrol, 6 Spd Auto, Leather Trim, 57kms



AS NEW ONLY \$32,995

2017 Mazda CX-5 GLX PTR
Collision Avoidance, Traction and Stability Control,
Autonomous Emergency Braking, i-STOP, Keyless
Start, 1998cc, Petrol, 6 Spd Auto, 47kms



NOW \$26,995

2013 Toyota HIGHLANDER LTD
NZ New 7 Seater 4WD
Reversing Camera, Cruise Control, VVT-i, Descent
Mode, Towbar, 3456cc, Petrol, 5 Spd Auto,
172kms



\$21,995

2014 HYUNDAI IX35 GDi 2.0 AUTO
STYLISH NZ NEW SUV.
2WD, Petrol, 155kms. Many Extras.



**ON SPECIAL
NOW \$15,995**

2012 Suzuki SWIFT LTDA
Low kms, NZ New
2WD, Stability Control, 5 Dr Hatch, Steering Wheel
Controls, Spoiler, 1372cc, petrol, Auto, 55kms



\$12,995

2015 Mazda CX-3 GLX SW
NZ New. i-Stop, NA Navigation, Keyless Start,
Reversing Camera, Traction & Stability Control,
1998cc, Petrol, 6 Spd Auto, 55kms



\$22,995

2011 Volkswagen Tiguan TDI 103KW
GREAT BUY, Roof Rails, Cruise Control, Front
and Rear Parking Sensors, Stability Control,
1968cc, Diesel, 6 Spd Auto, 232kms



\$8,995

2020 Ford Escape TREND
2.0L Turbo AWD
Auto Headlights, NZ Navigation, Reversing
Camera, Collision Avoidance, Keyless Entry and
Ignition, 1999cc, Petrol, Auto, 52kms



\$26,995

VEHICLES ARRIVING DAILY - SEE ONSITE SPECIALS
VISIT MERITCARS.CO.NZ



LOCALLY OWNED & OPERATED

Ph 06 281 1925 • Chris Elliot 027 471 5972

Ph 06 757 3585 • Jamie Henry 021 556 223